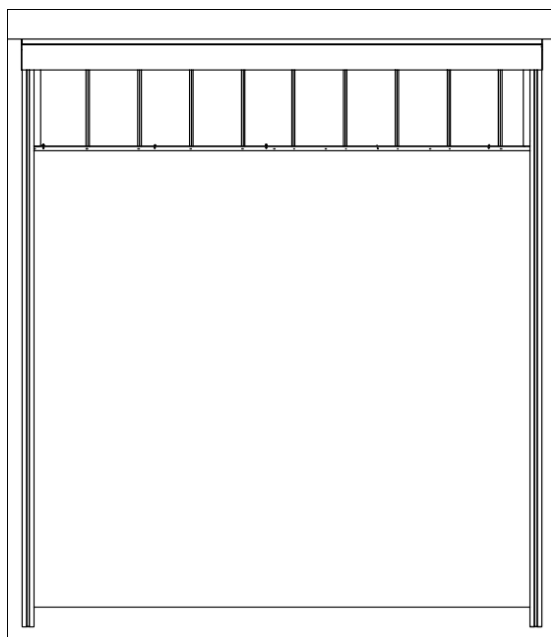
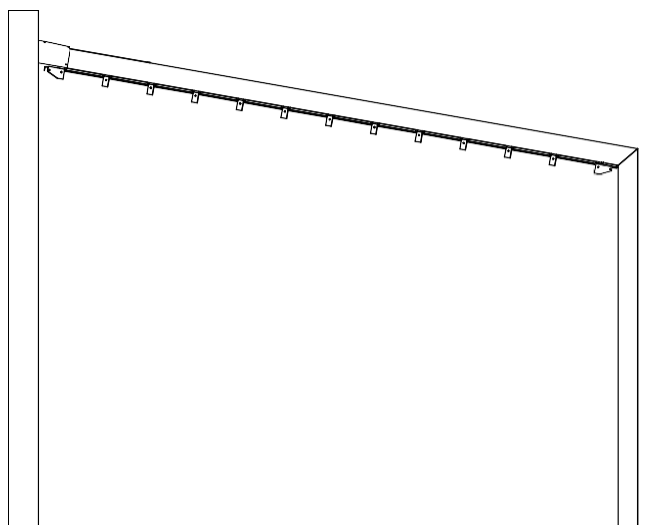
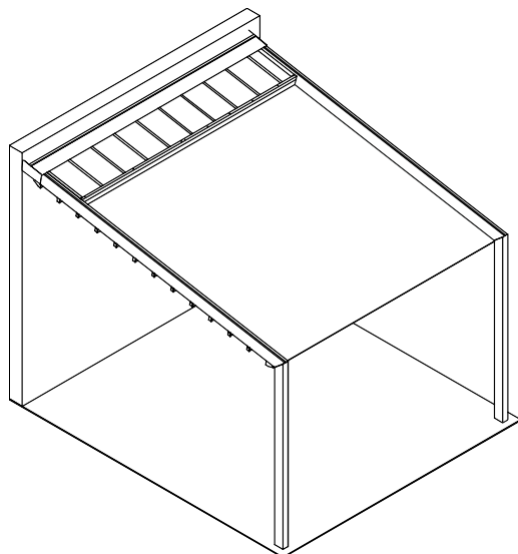
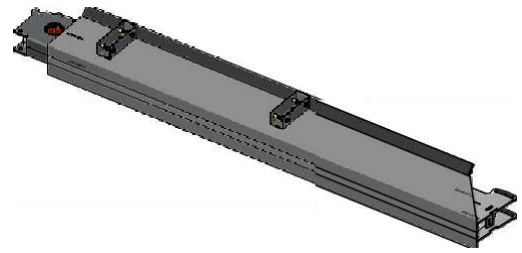


# TARASOLA LIGHT INSTALLATION MANUAL

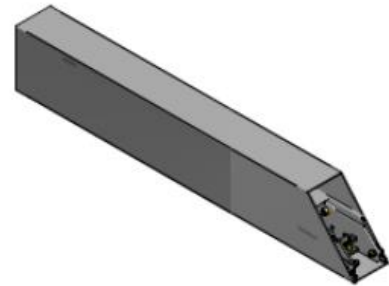


## ITEM LIST:

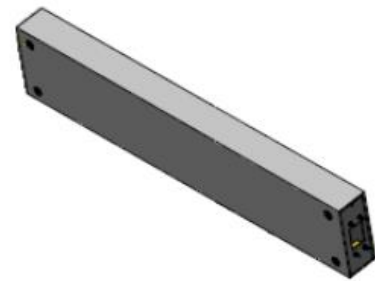
### 1. GUIDES



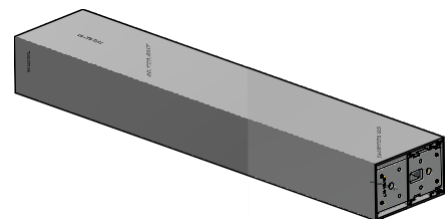
### 2. SUPPORTING PROFILE



### 3. CLAMPING PROFILE



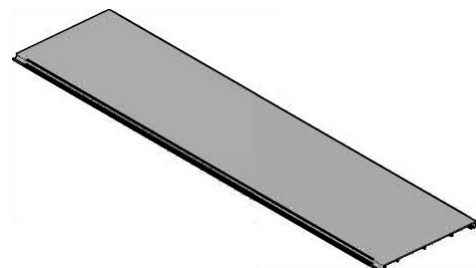
### 4. ADDITIONAL CLAMPING PROFILE



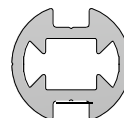
### 5. LAUNCH PROFILE



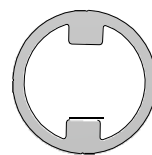
### 6. MASKING FRAME



## 7. DRIVE PROFILE

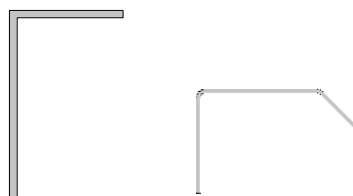


**TNA.201.01**  
(inner shaft)

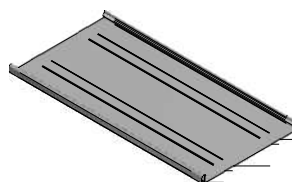


**TNA.202.01**  
(outer shaft)

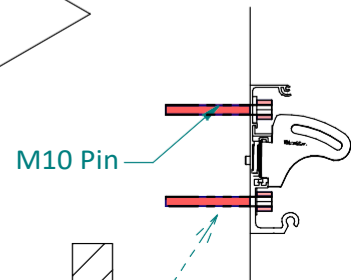
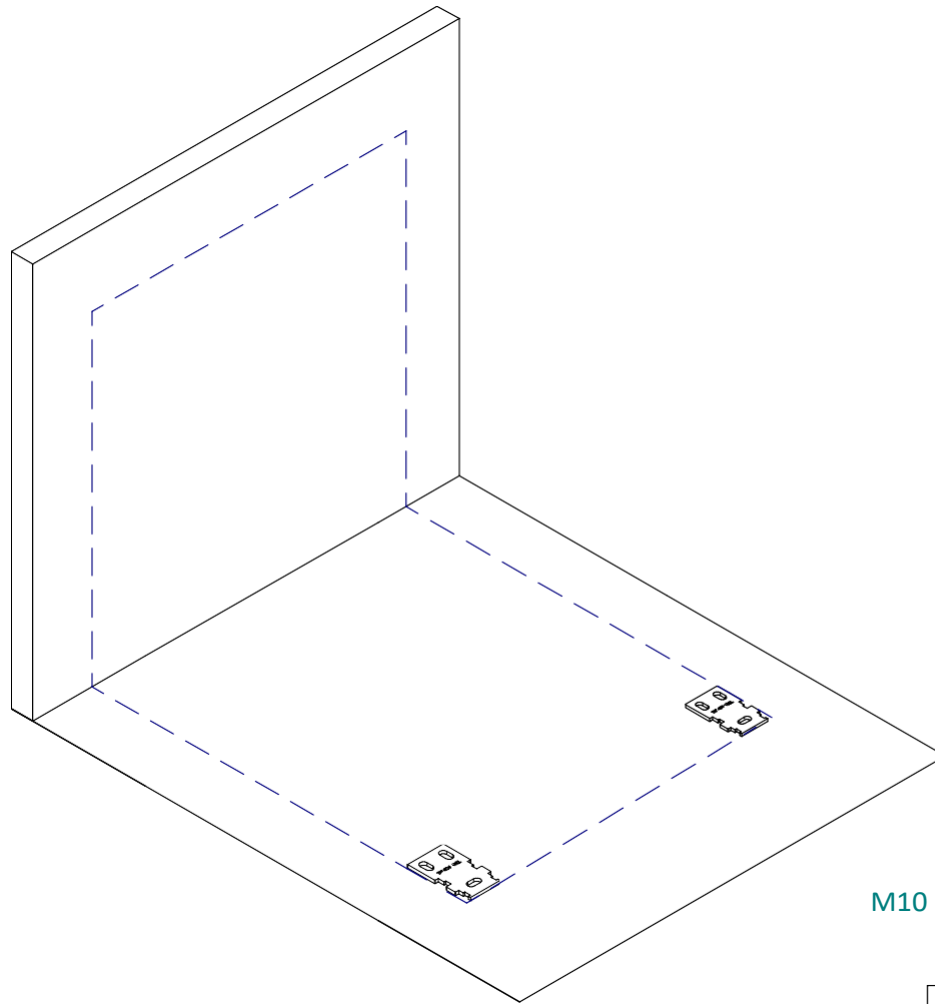
## 8. FLASHING



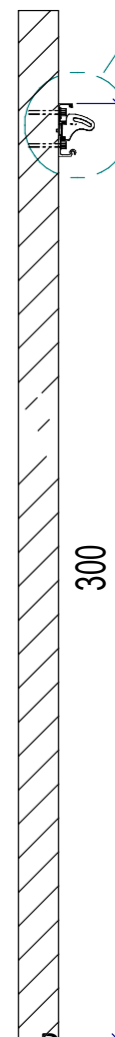
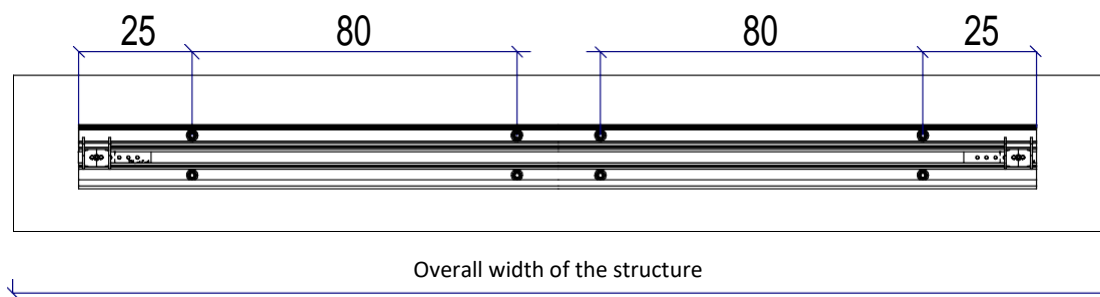
## 9. FABRIC VISOR



I. ESTABLISHING THE LEVEL AND THE HEIGHT OF THE LAUNCH PROFILE MOUNTING AND ALSO ESTABLISHING THE OUTLINE OF THE STRUCTURE

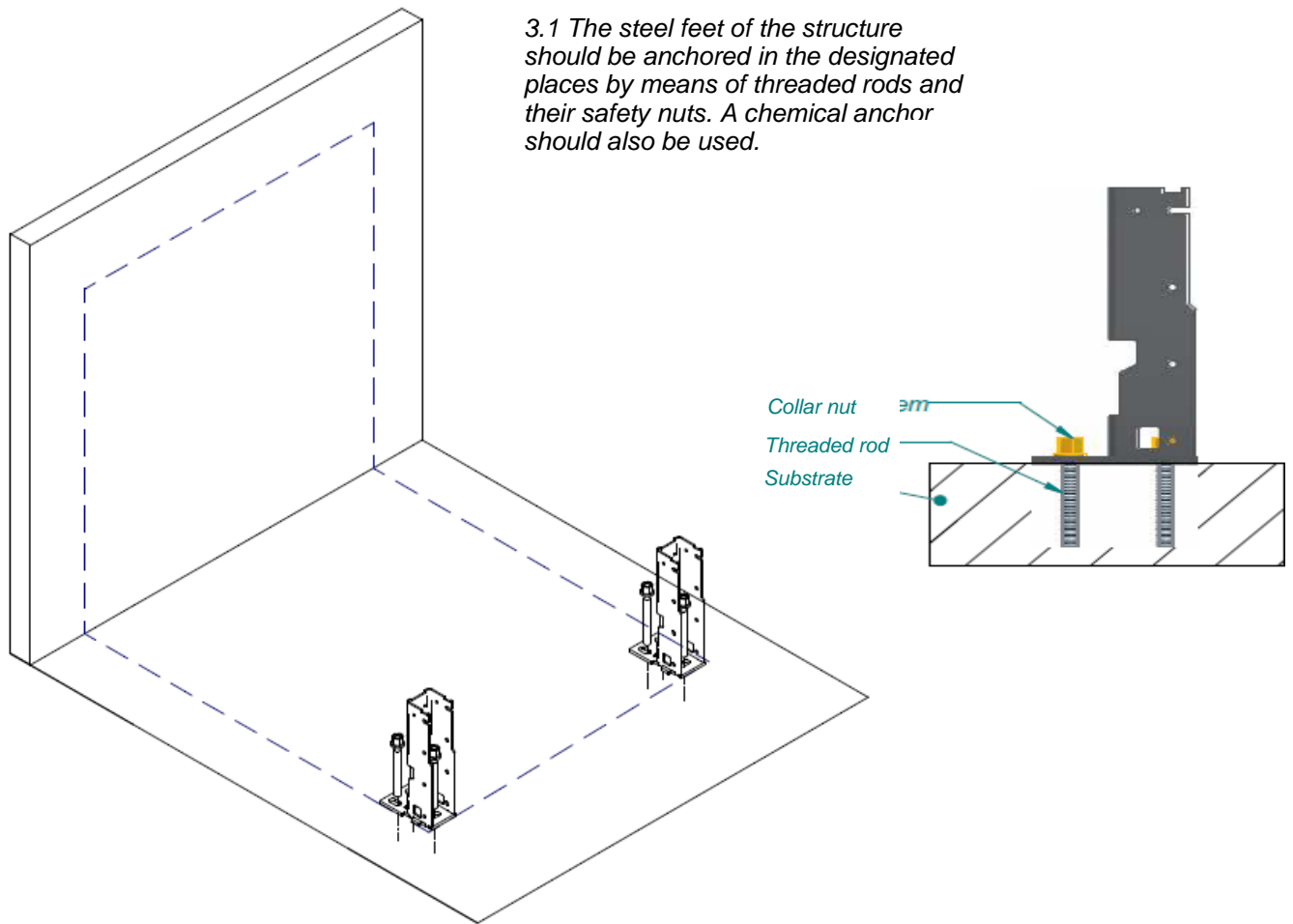


II. ASSEMBLING THE REAR LAUNCHING PROFILE

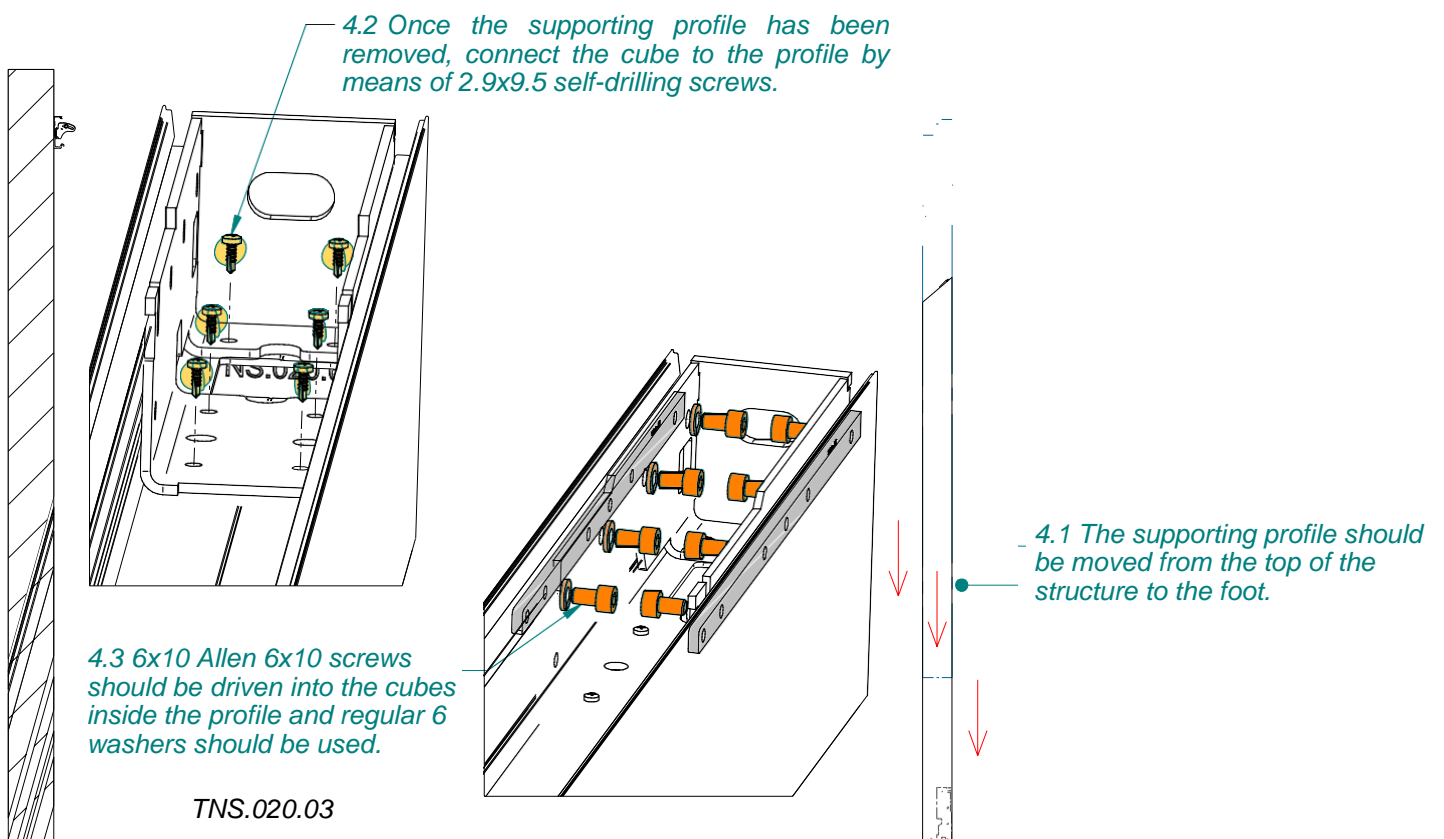




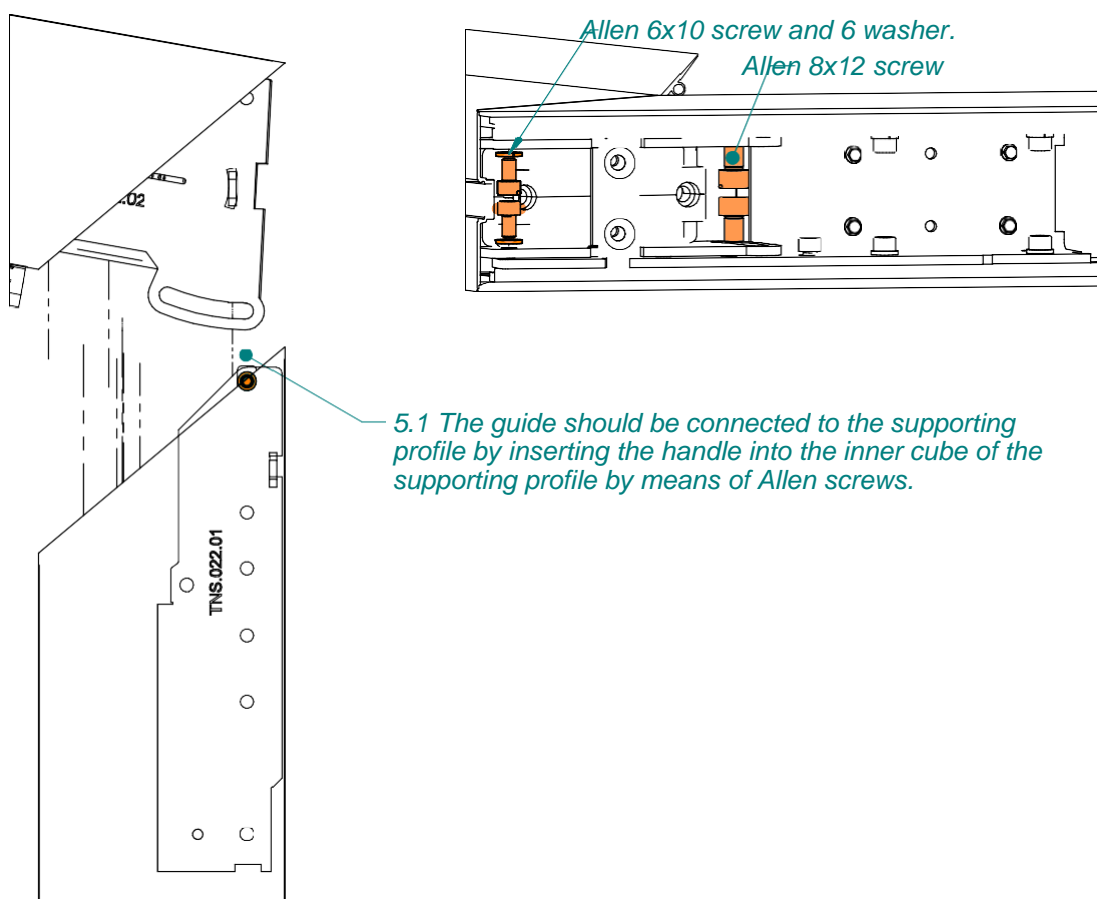
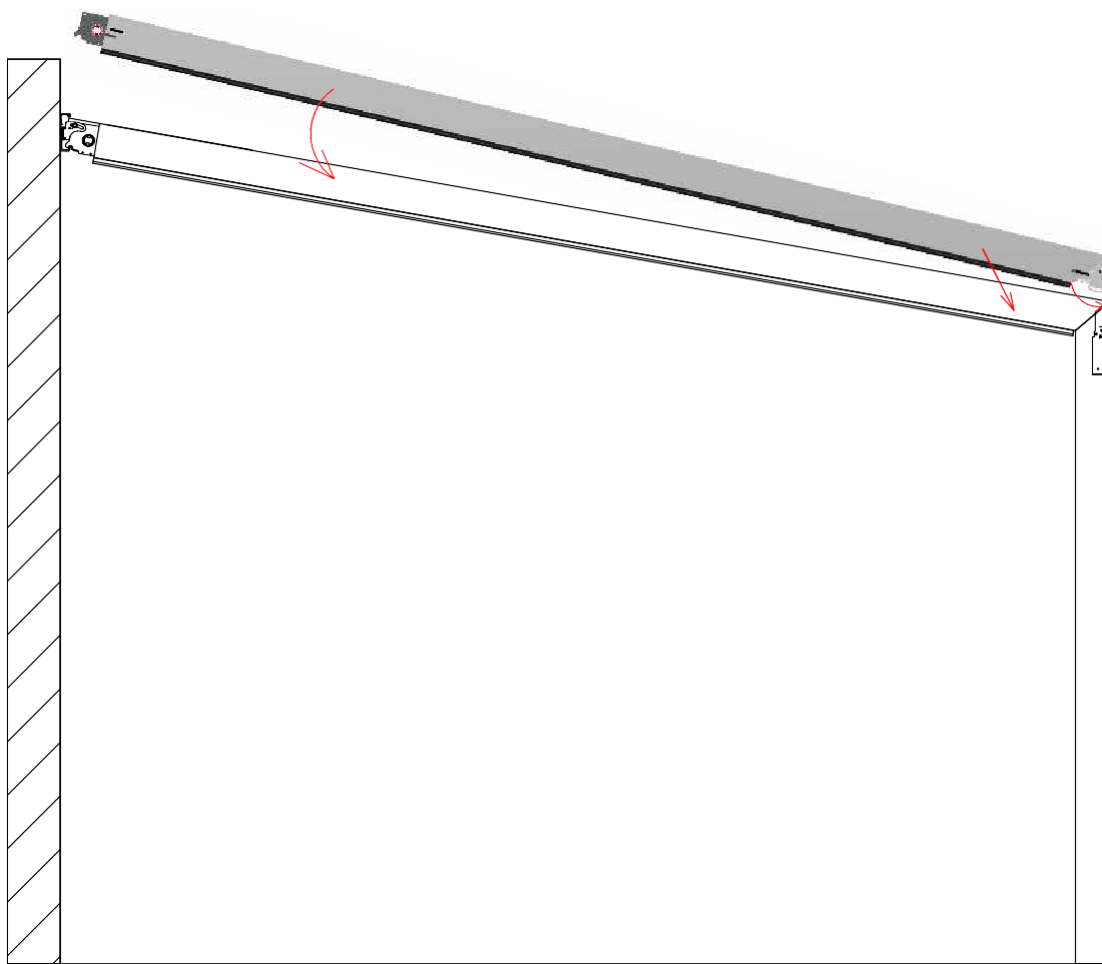
### III. ASSEMBLING THE STEEL FEET

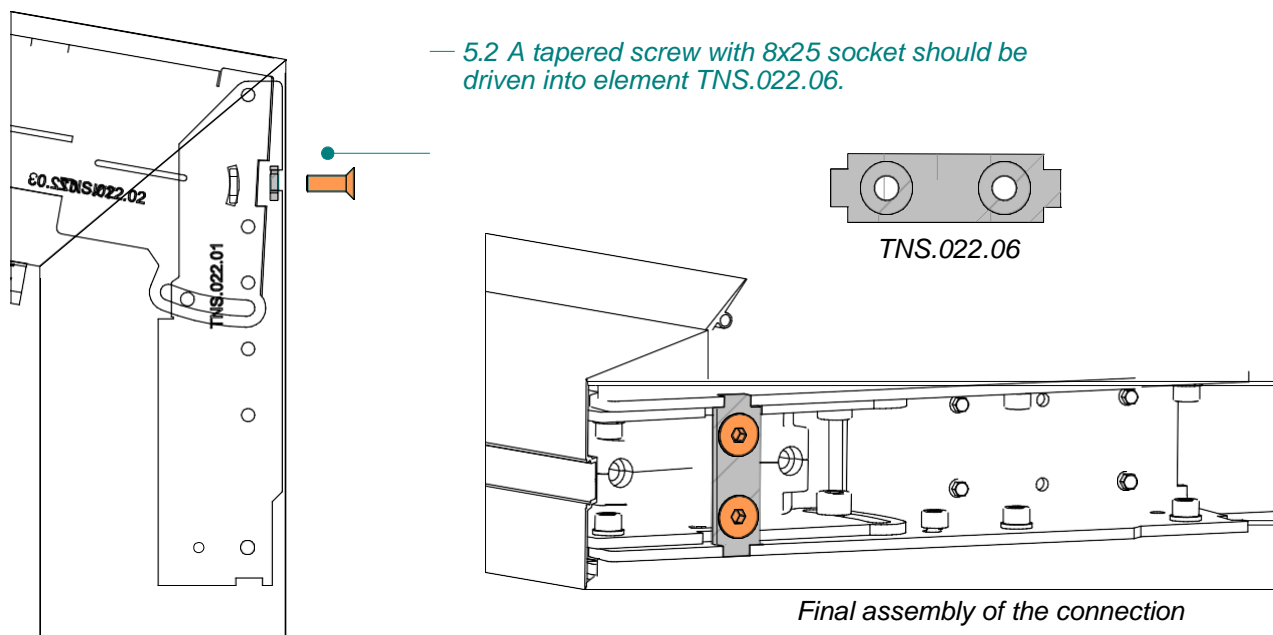


### IV. MOUNTING THE SUPPORTING PROFILES ONTO THE FEET

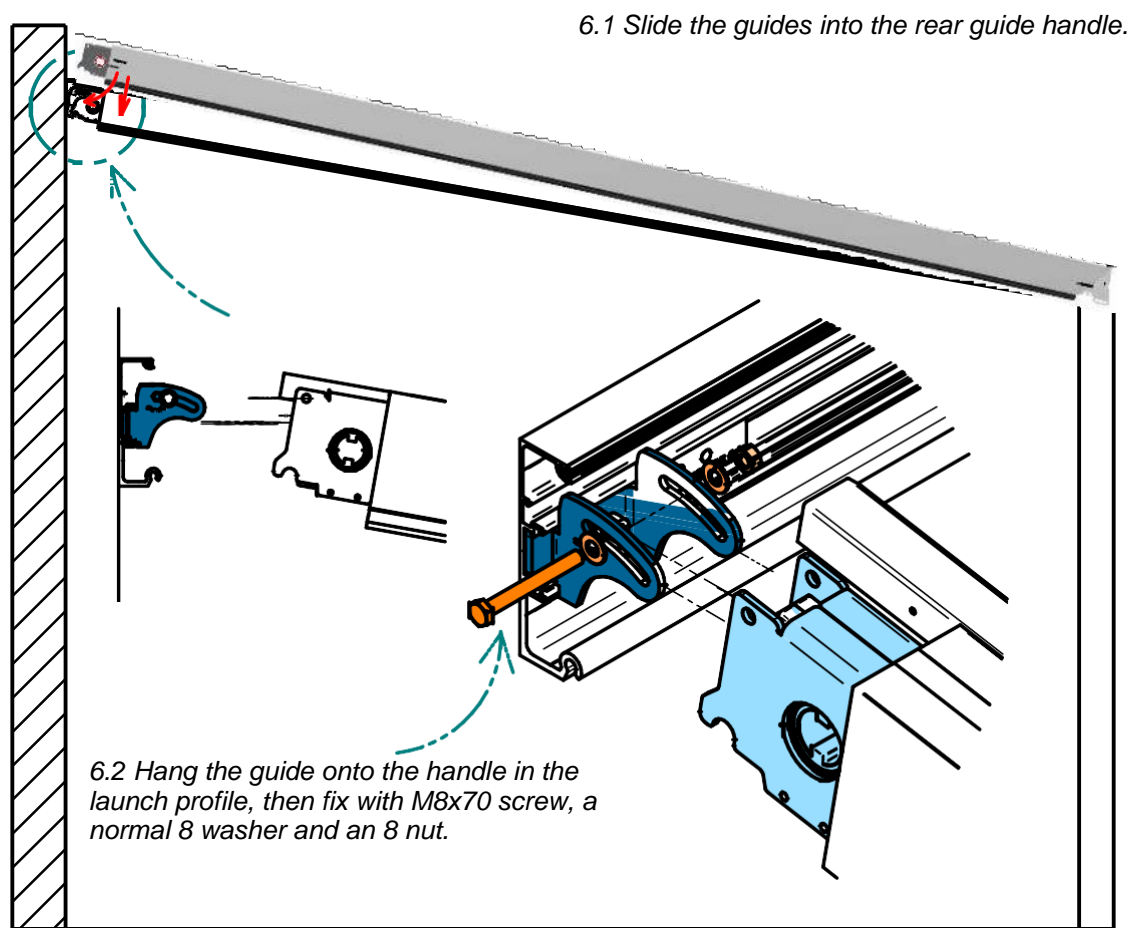


## V. CONNECTING THE GUIDE AND FRONT SUPPORTING PROFILE

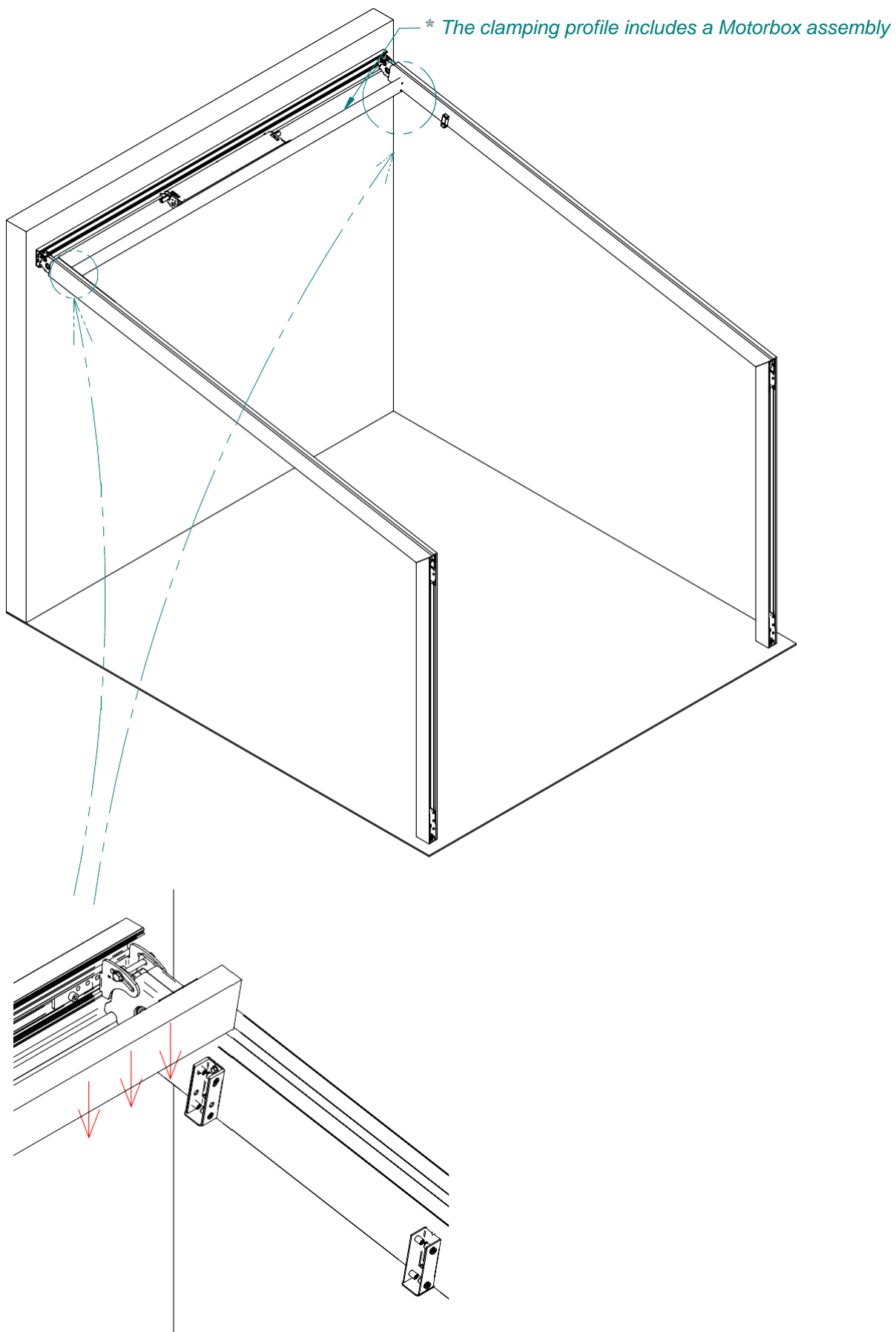




## VI. CONNECTING THE GUIDE WITH THE REAR LAUNCH PROFILE



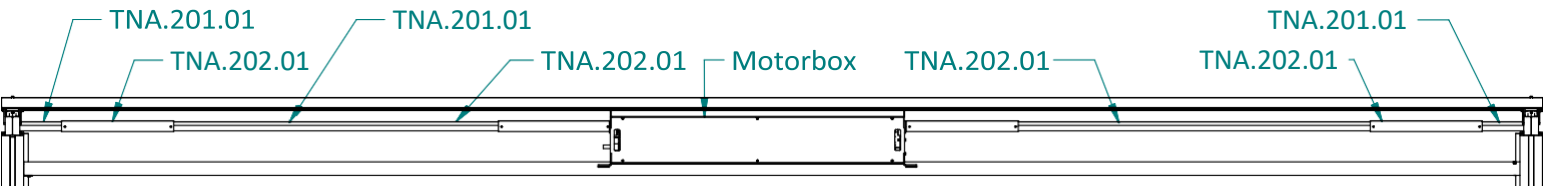
## VII. ASSEMBLING THE CLAMPING PROFILE



7.1 Insert the clamping profile – the direction of motion is shown by arrows and screw with M6x16.

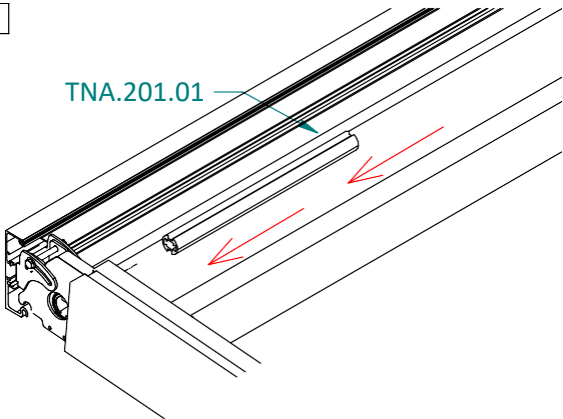
# VIII. ASSEMBLING THE DRIVE PROFILES

(Final assembly of drive transmission profiles)

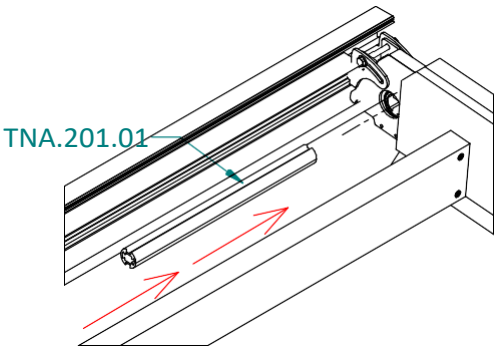


## STAGES IN THE ASSEMBLY OF THE DRIVE TRANSMISSION

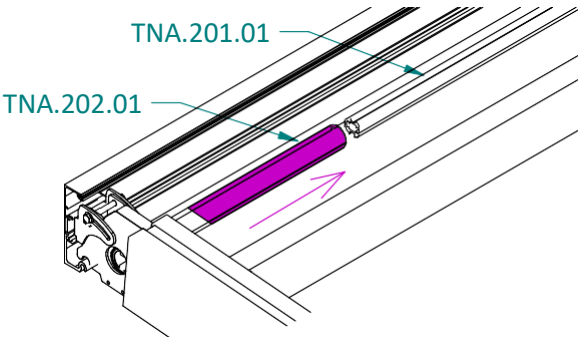
1



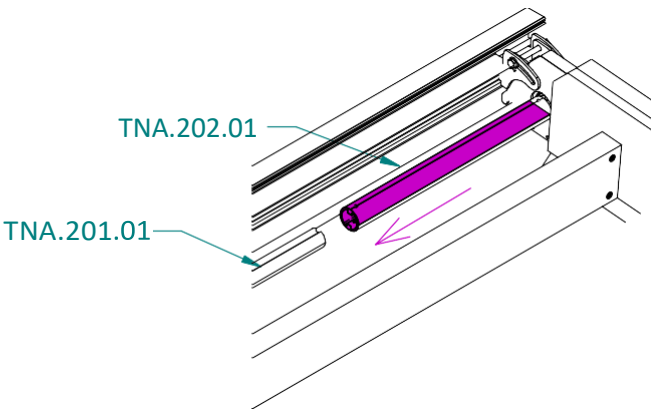
2



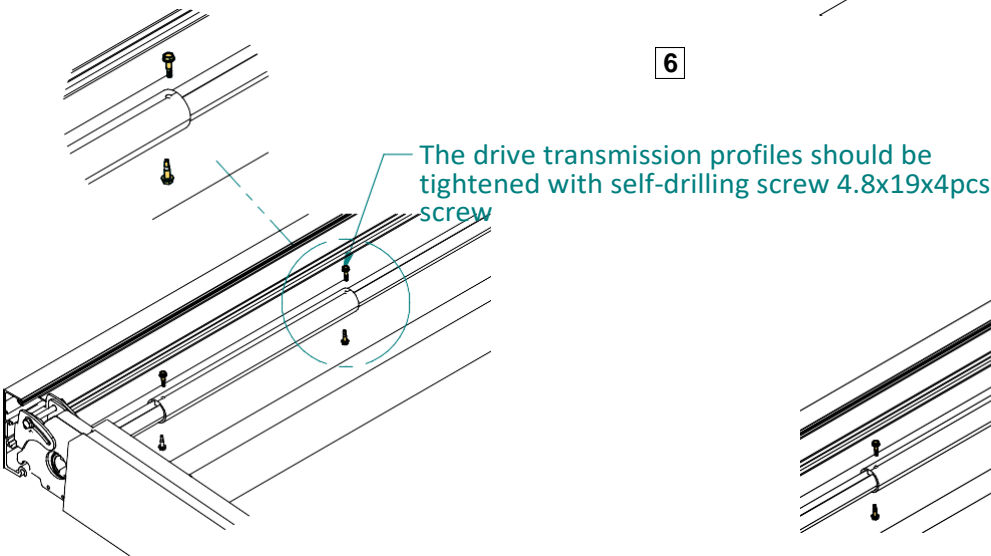
3



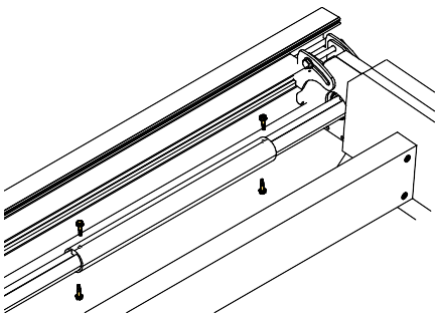
4



5



6



7

TNA.202.01

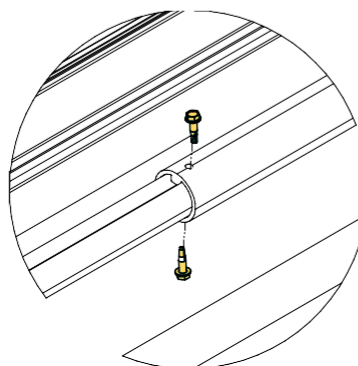
TNA.202.01

8

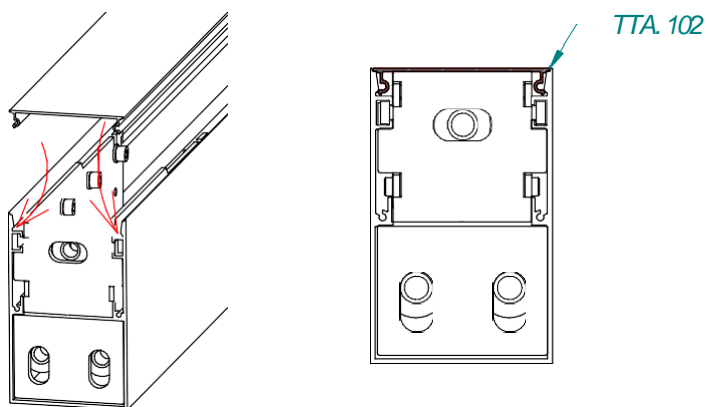
DRIVE

The drive transmission profiles should be tightened with self-drilling screw 4.8x19x4pcs

9

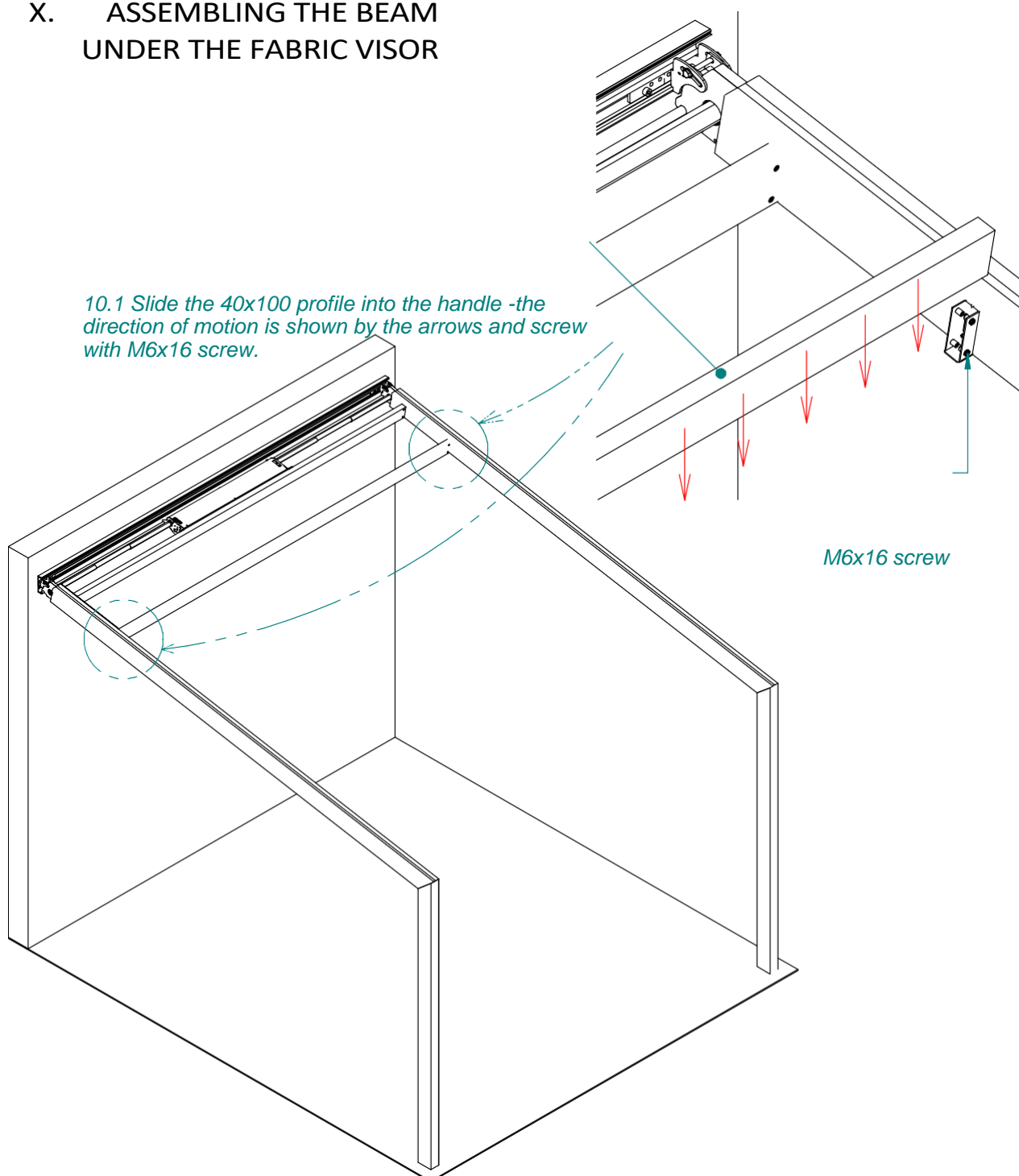


## IX. ASSEMBLING THE COVER-CAP OF THE PILLAR PROFILE



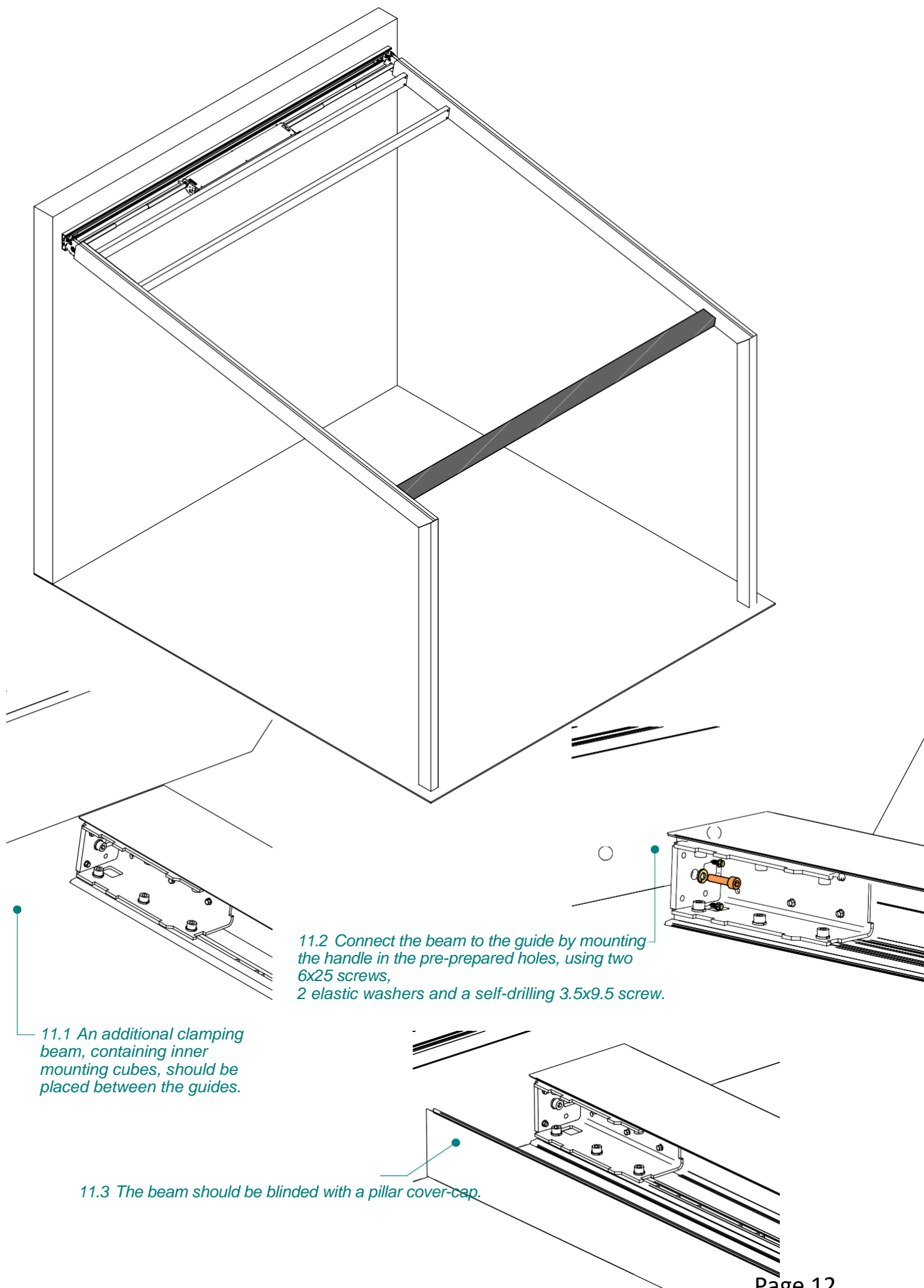
9.1 Install the cover-cap for the pillar.

## X. ASSEMBLING THE BEAM UNDER THE FABRIC VISOR



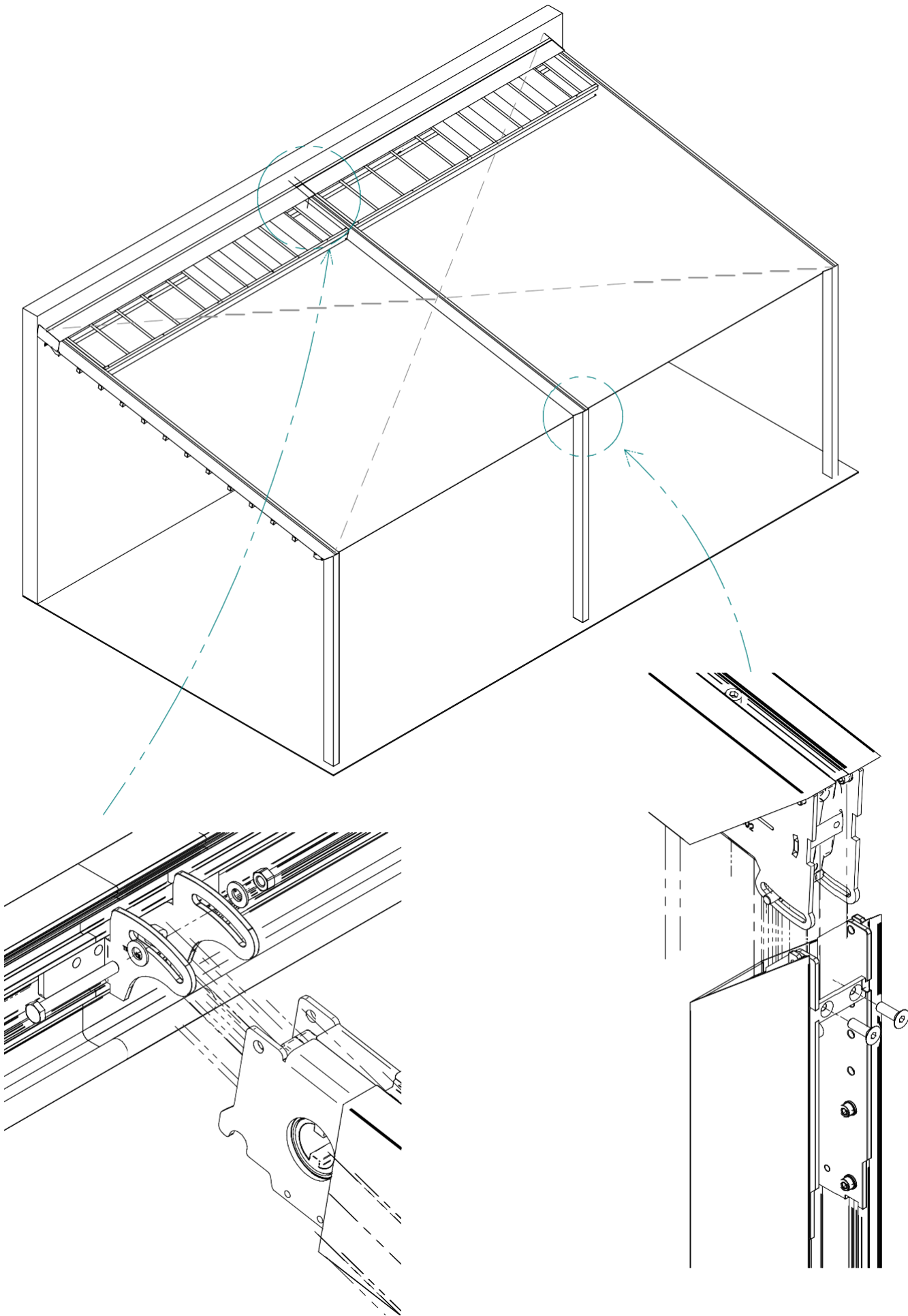


## XI. INSTALLING AN ADDITIONAL CLAMPING BEAM





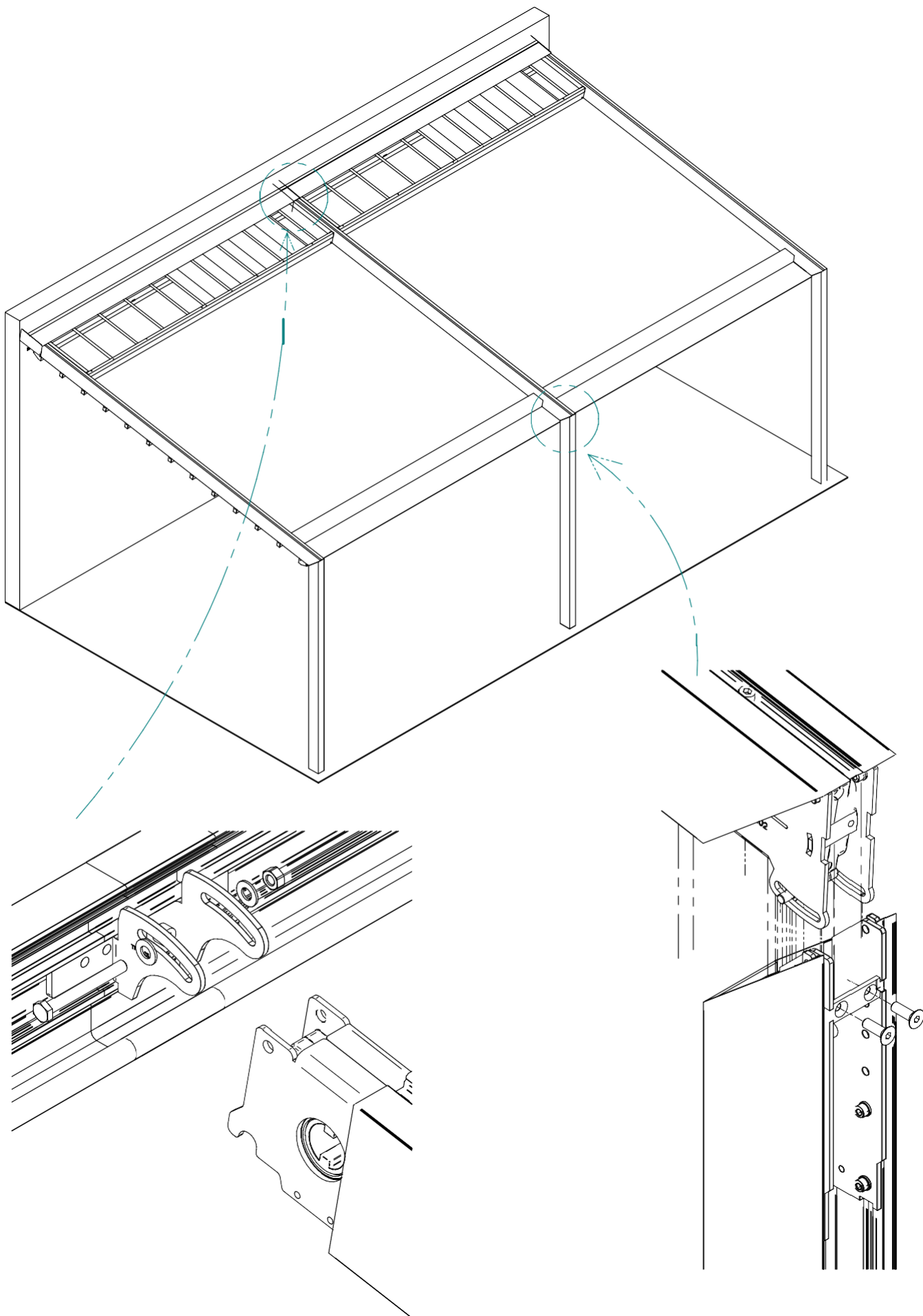
MODULAR CONNECTION OF THE MODEL  
*(1-visor)*



## MODULAR CONNECTION OF THE MODEL

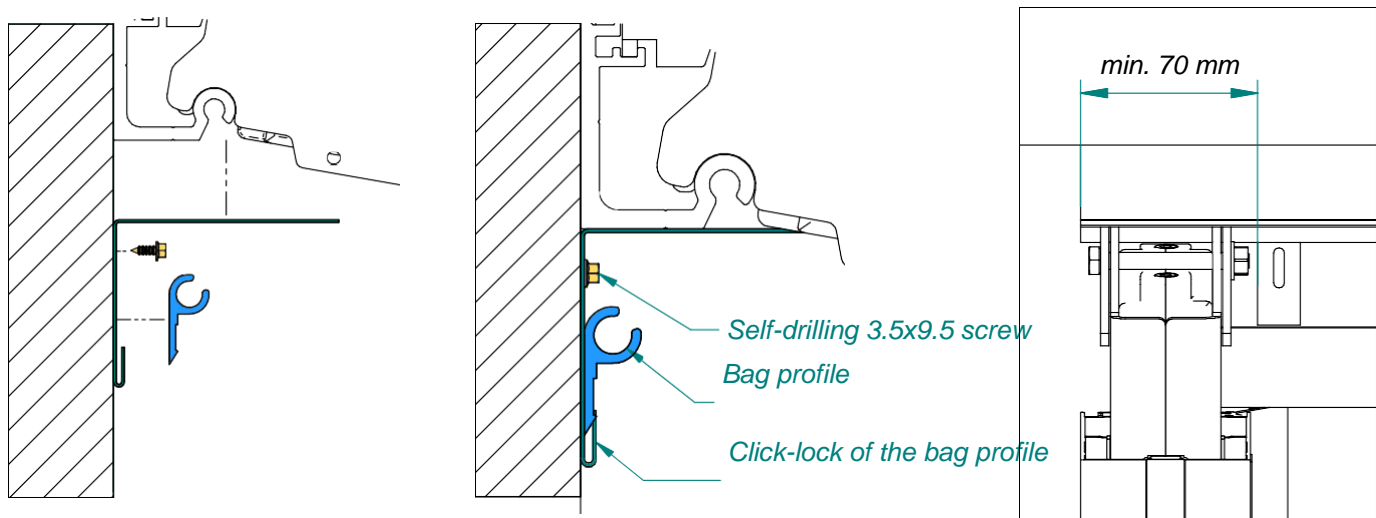
(1-visor)

- Additional clamping profile

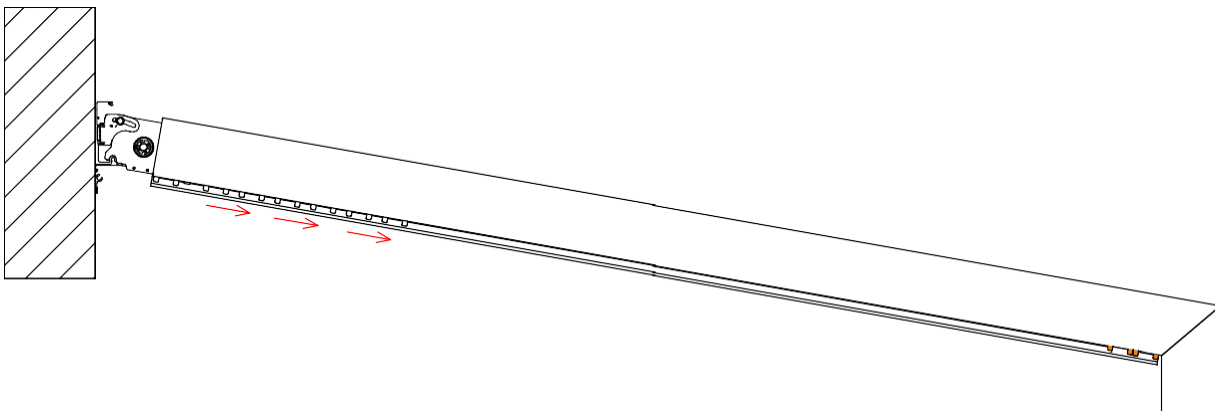


### XIII. ASSEMBLY OF THE FABRIC

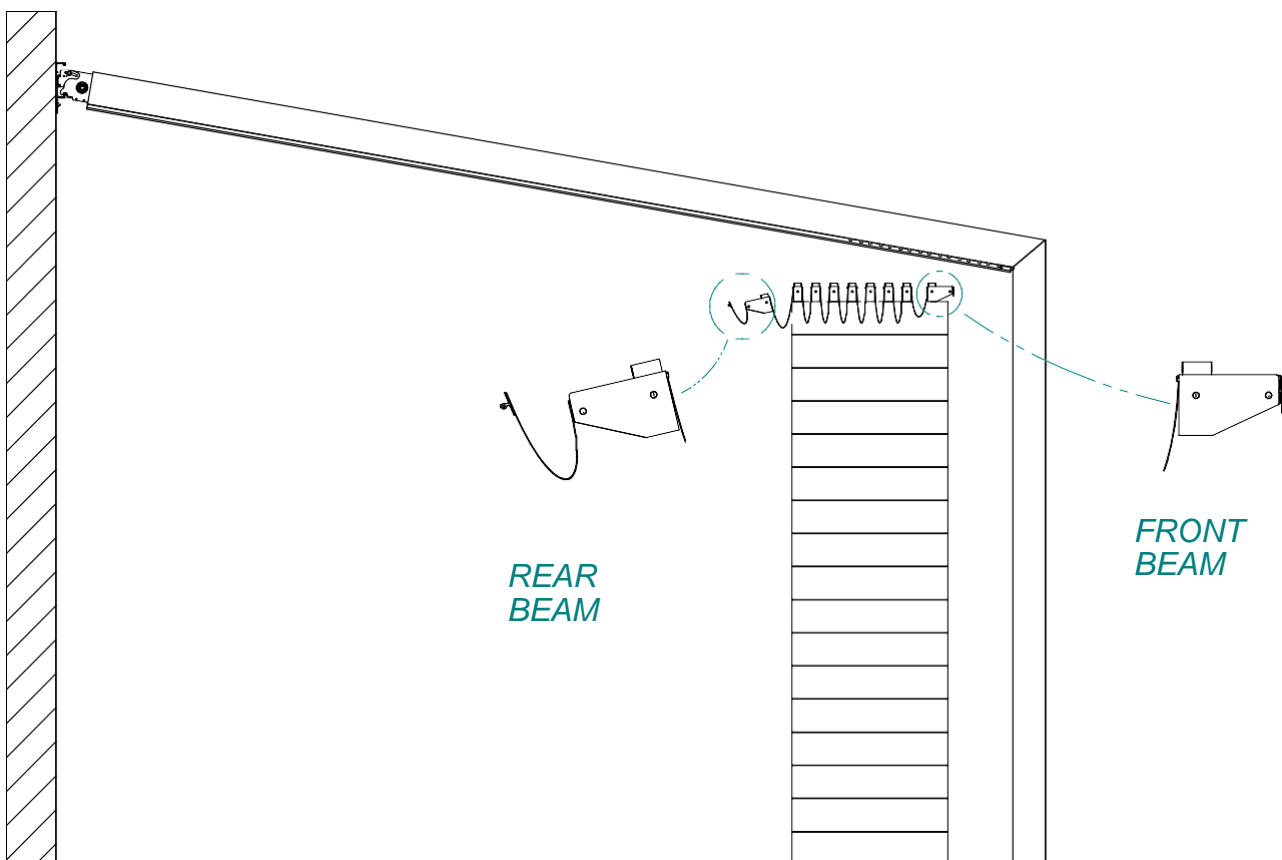
12.1 Attach the bag profile onto the rear wall profile.



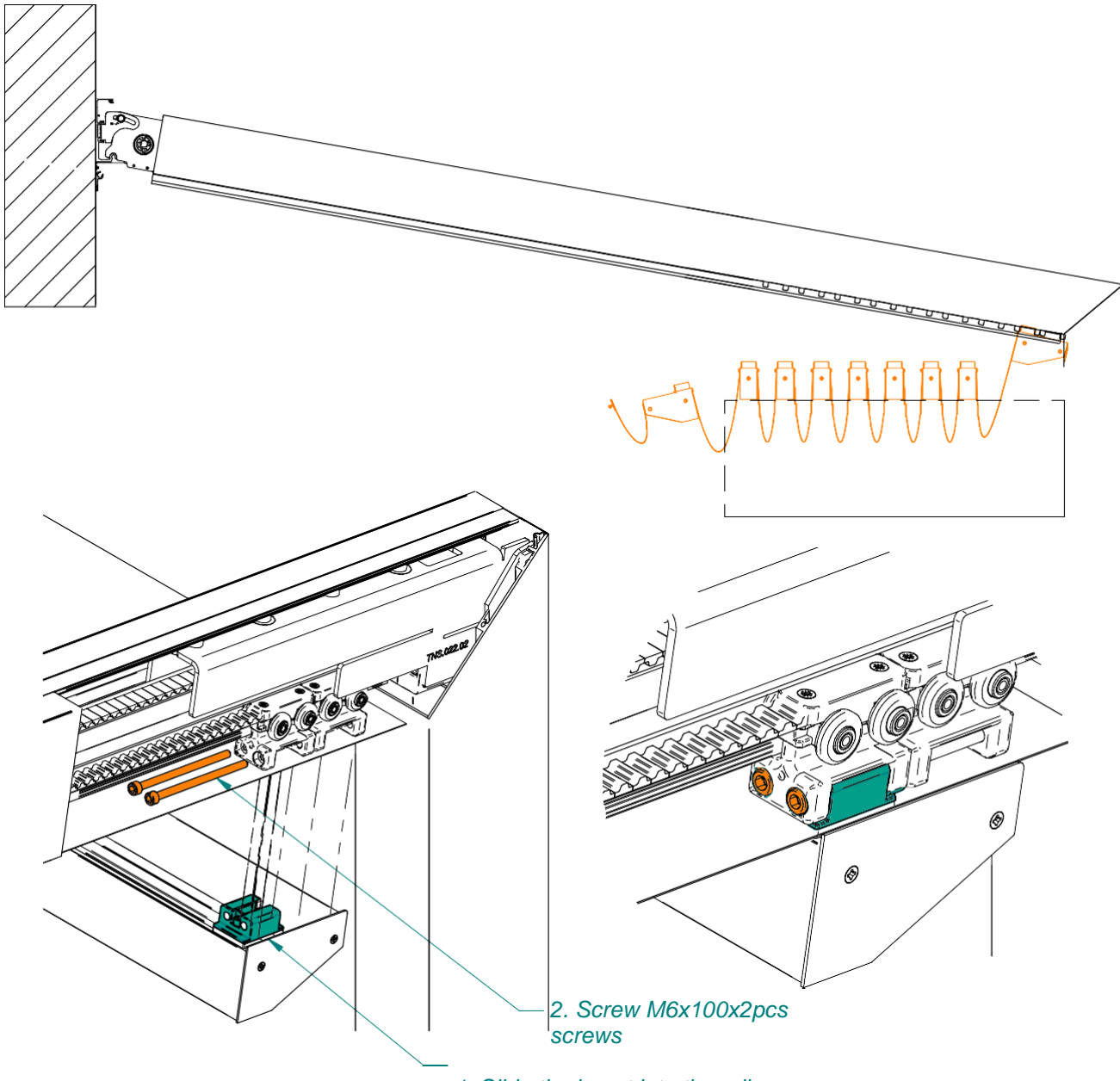
12.2 Start the motor and then drive the first roller in the guide setting it close to the gutter.



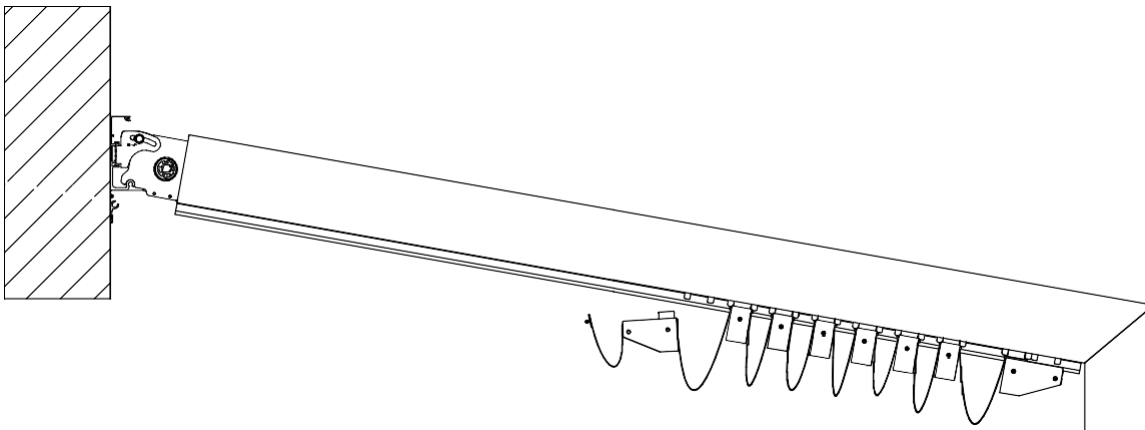
12.3 Place the fabric package onto the scaffold close to the guides.



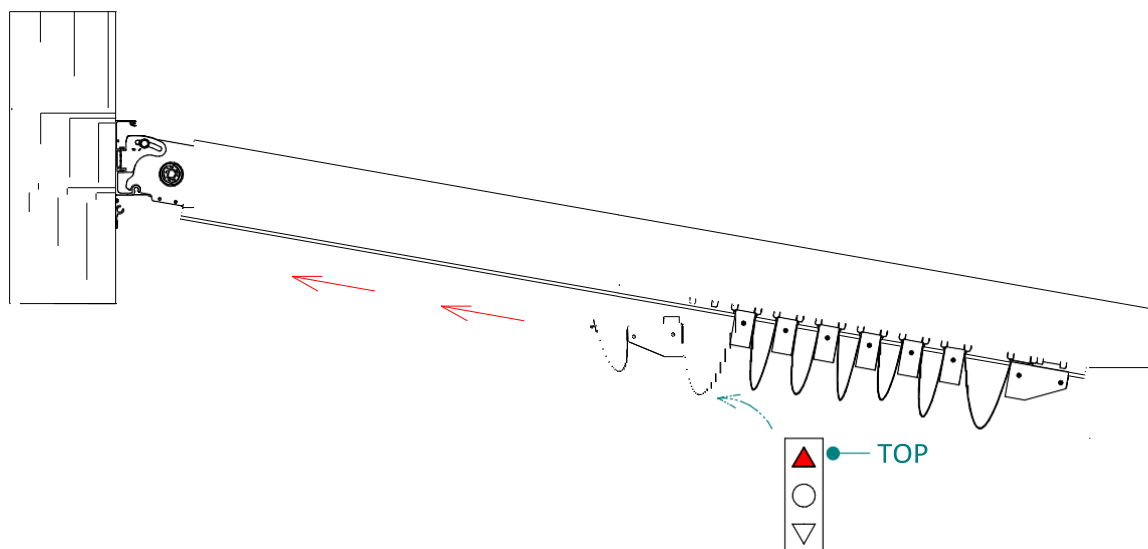
12.4 The assembly should be commenced by mounting the front beam.



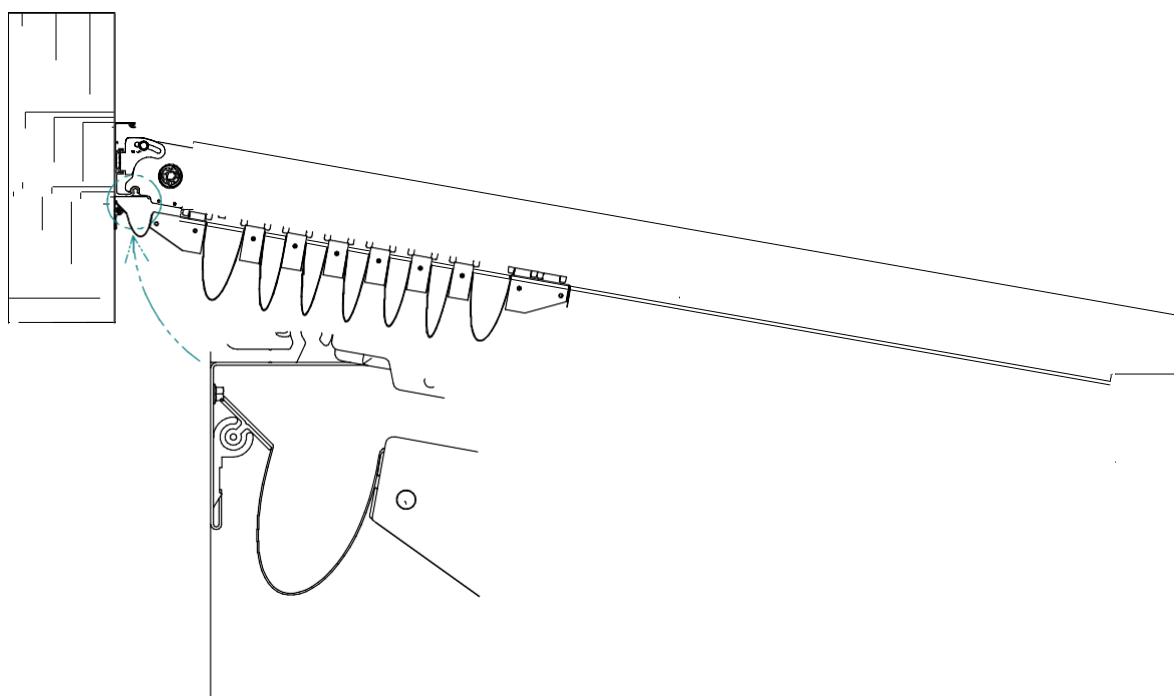
12.5 Then install the remaining small beams in the same way.



12.6 After installing a package of fabric without a rear beam, move it towards the rear wall profile using Motorbox



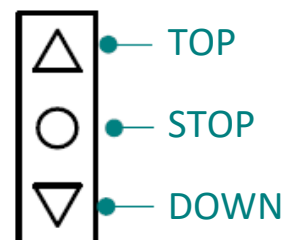
12.7 Install the rear beam.

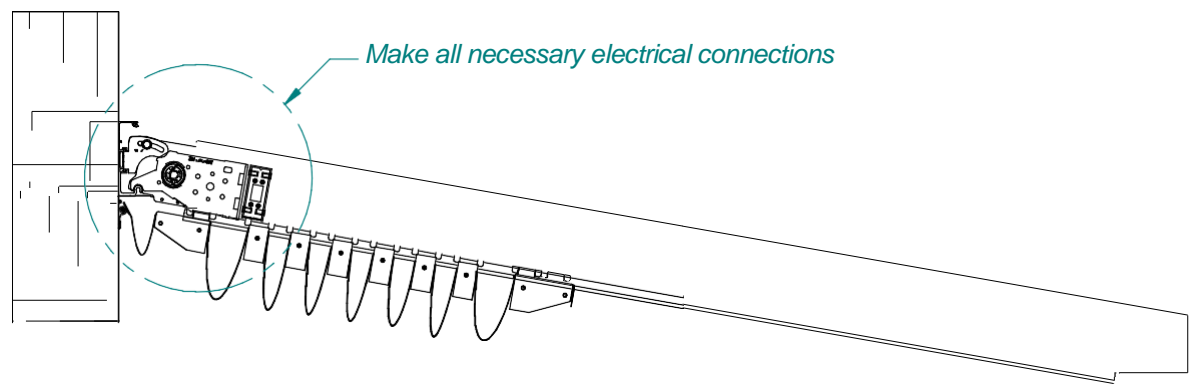


12.8 The end positions of the fabric should be set.

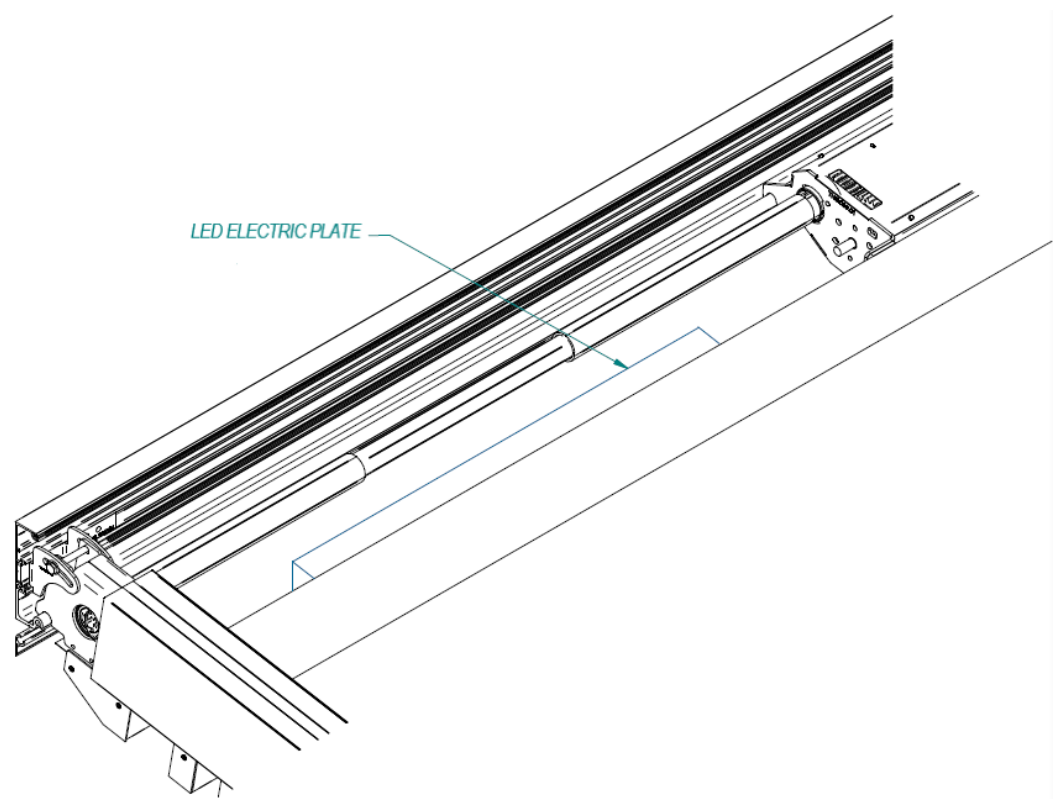
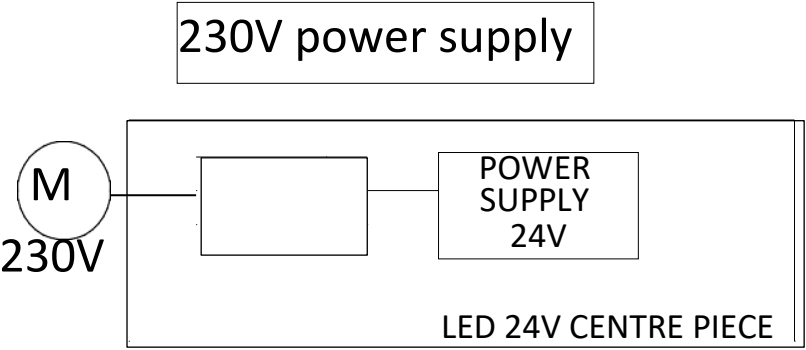
PROCEDURE FOR SOMFY SETTING

1. Press the UP/DOWN button simultaneously to put the engine into assembly mode.
2. Then press the STOP/DOWN buttons at the same time to allow the fabric sheathing of the visor to slide down and allow the engine's end positions to be set.
3. At this point, adjust the end positions by pressing the buttons sequentially. TOP/DOWN and then STOP.
4. The fabric sheathing of the visor should be pulled back to the top while pressing the TOP/STOP buttons simultaneously; when the fabric reaches the rear position, press the STOP button.
5. In order to set the end position in the current setting, repeat the steps described in [Section 3](#).
6. After performing these steps, save the current settings by inserting a stick into the hole on the back of the remote control.
7. In the case of deregulation of the end settings:
  - 7.1 Lower the sheathing into the bottom position by pressing DOWN/STOP buttons, then a STOP/DOWN combination; movement of the sheathing indicates that the correct mode has been entered, at this point, press the UP/DOWN buttons and finally confirm this position with the STOP button.
  - 7.2 Pull the sheathing into the top position by pressing the TOP/STOP button, then the STOP/TOP combination; a movement of the sheathing, indicates that the correct mode has been entered, at this point, press the UP/DOWN buttons and finally confirm the position with the STOP button.





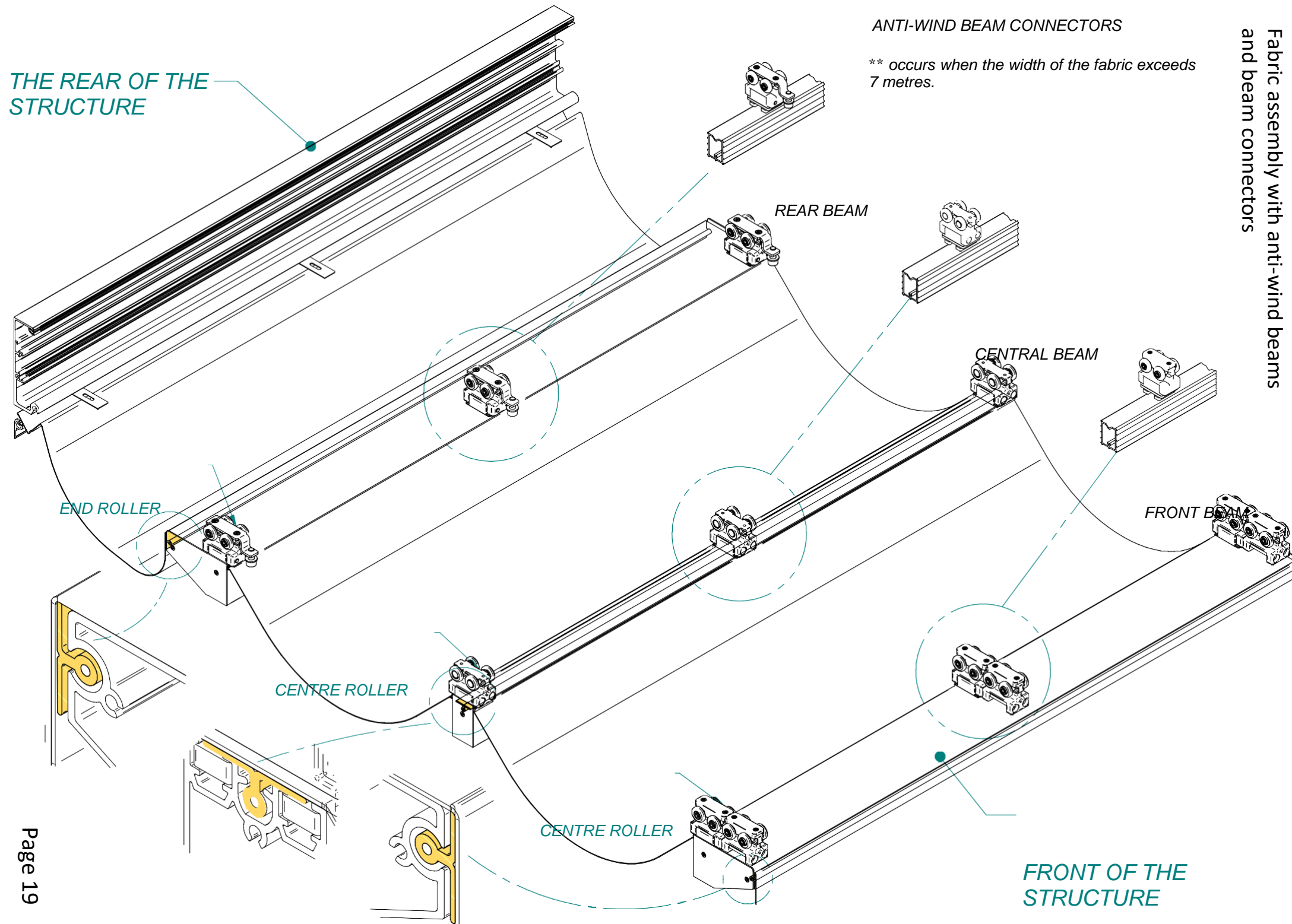
Power board diagram



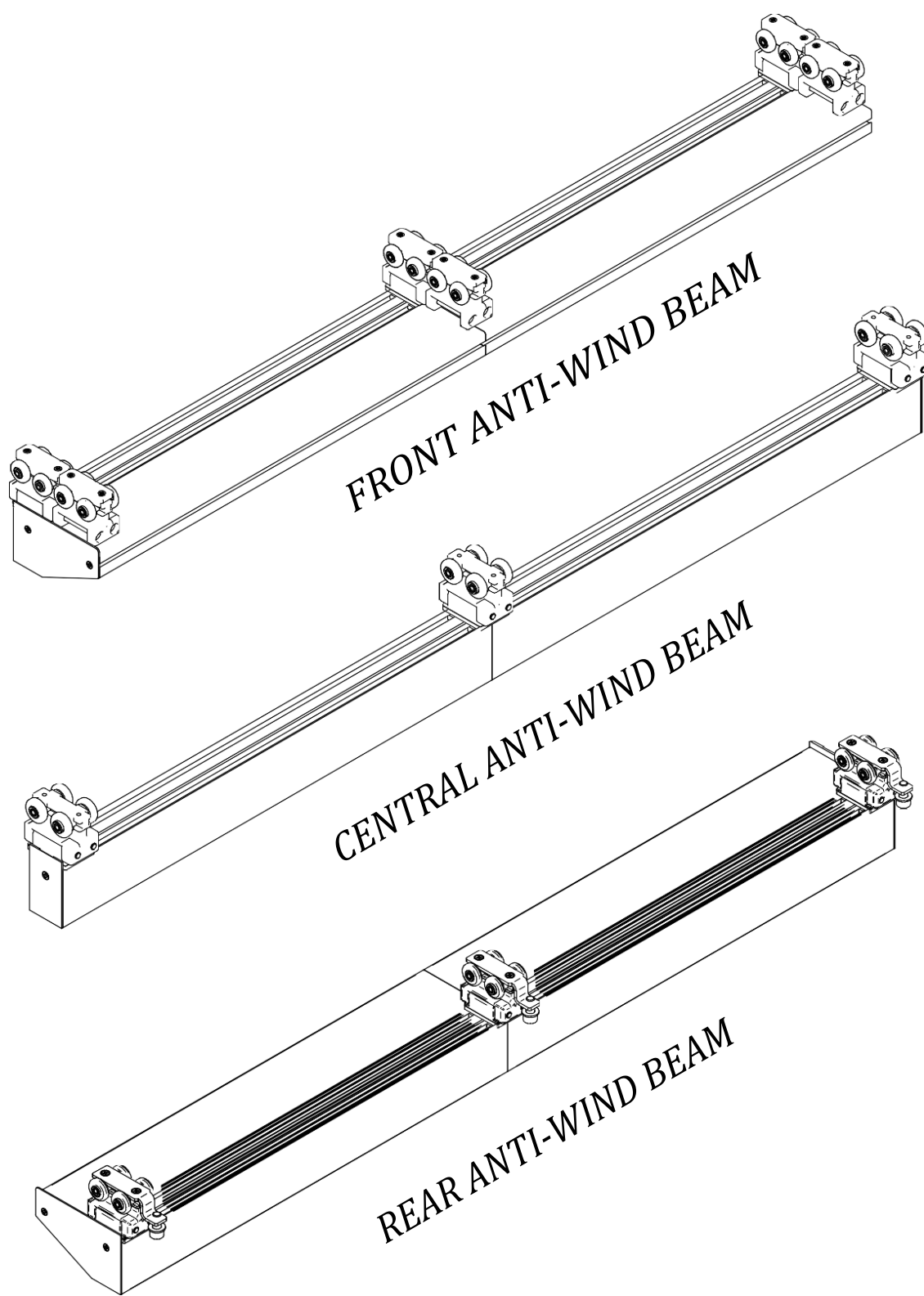


ANTI-WIND BEAM CONNECTORS

\*\* occurs when the width of the fabric exceeds 7 metres.

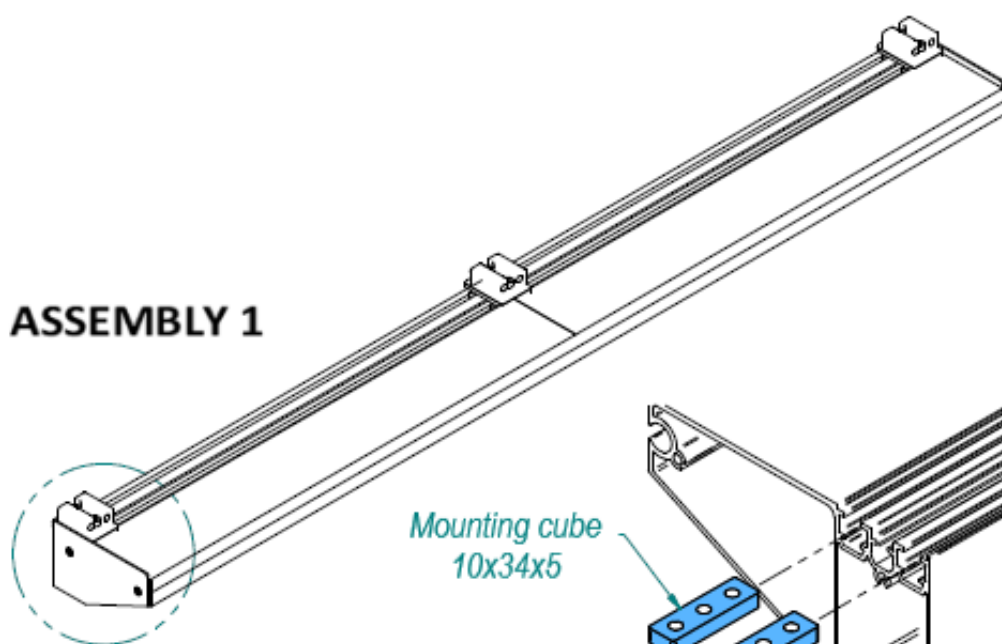


Instalation of the beams in the fabric assembly

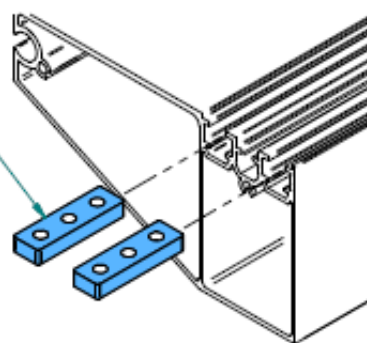




## ASSEMBLY 1

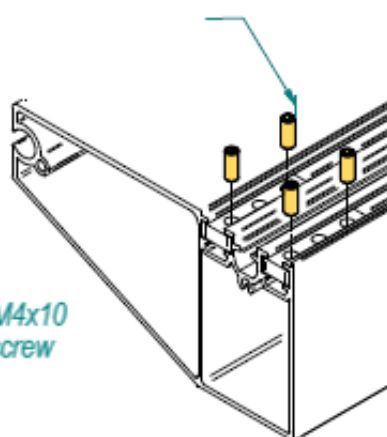


Mounting cube  
10x34x5

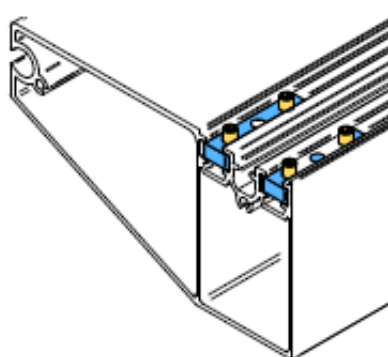


STEP 1

Pressure M4x10  
tapered screw

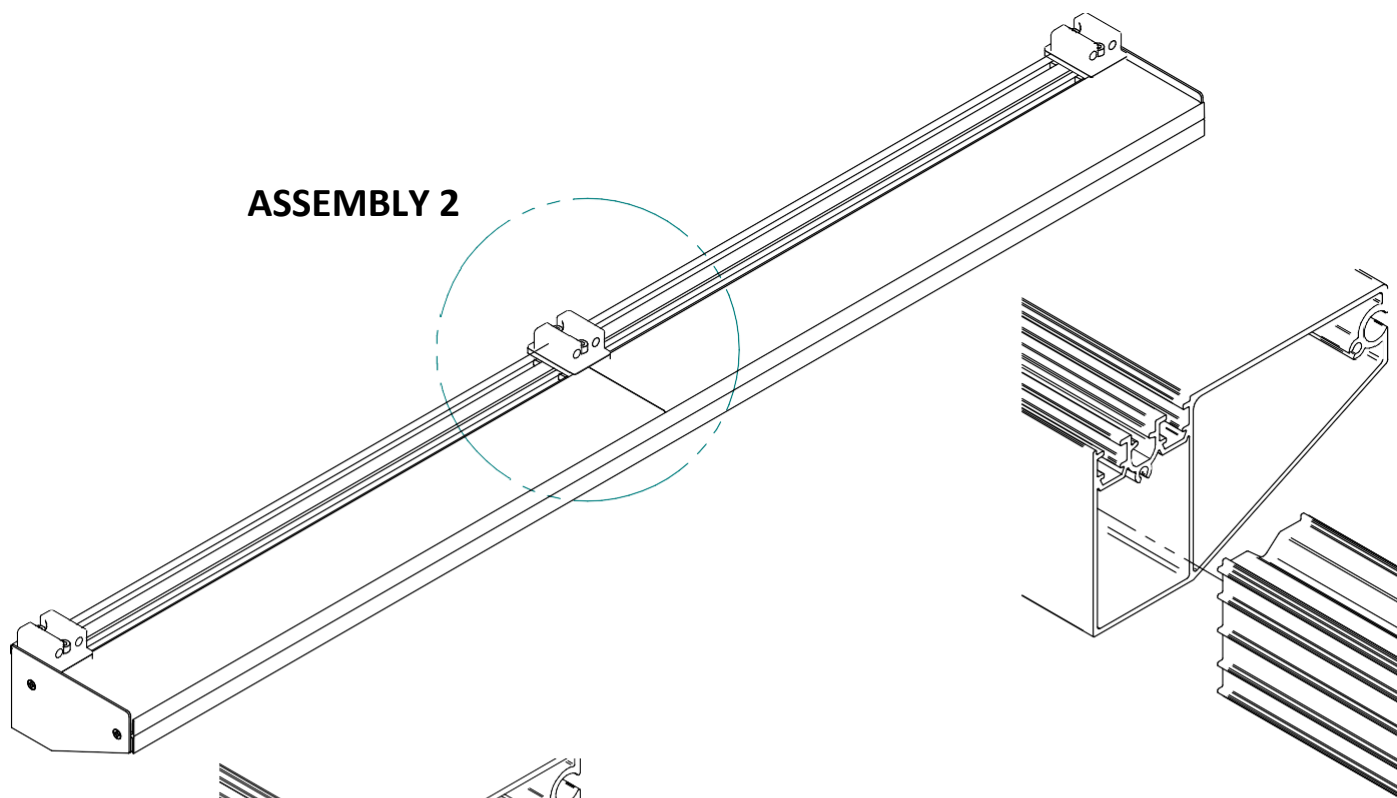


STEP 2

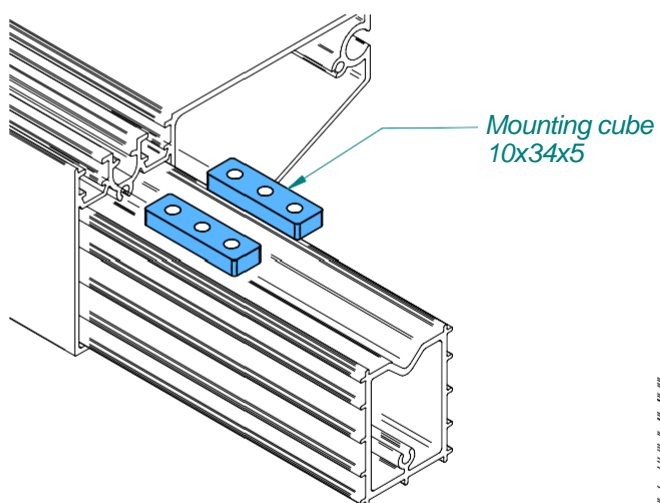


KROK 3

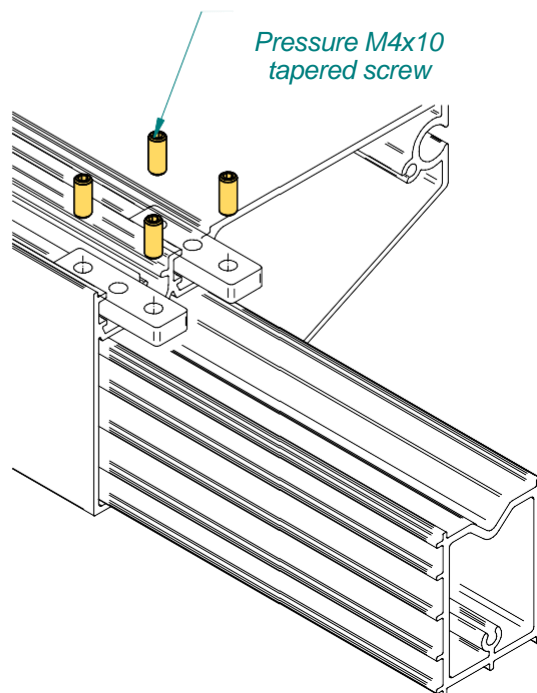
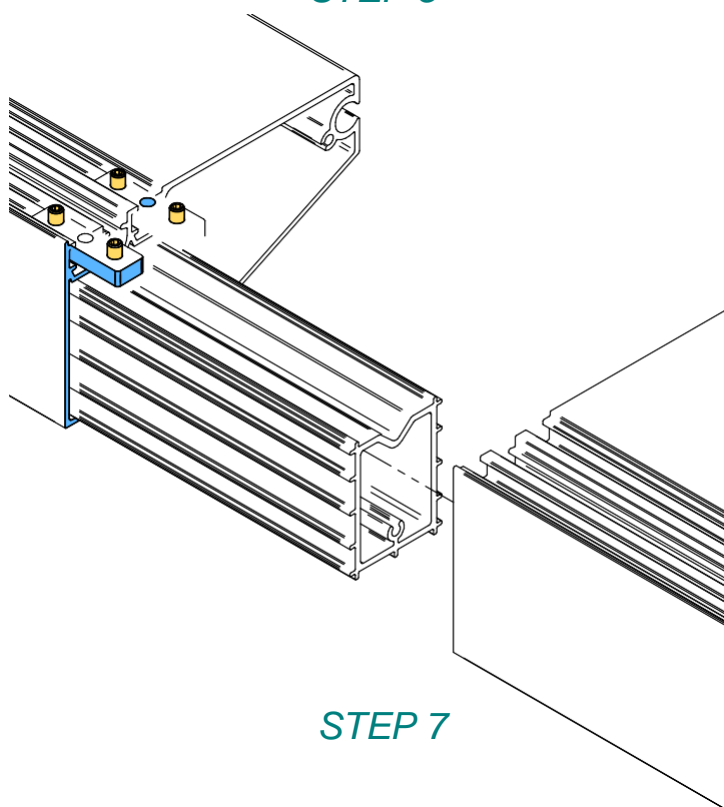
## ASSEMBLY 2



STEP 4

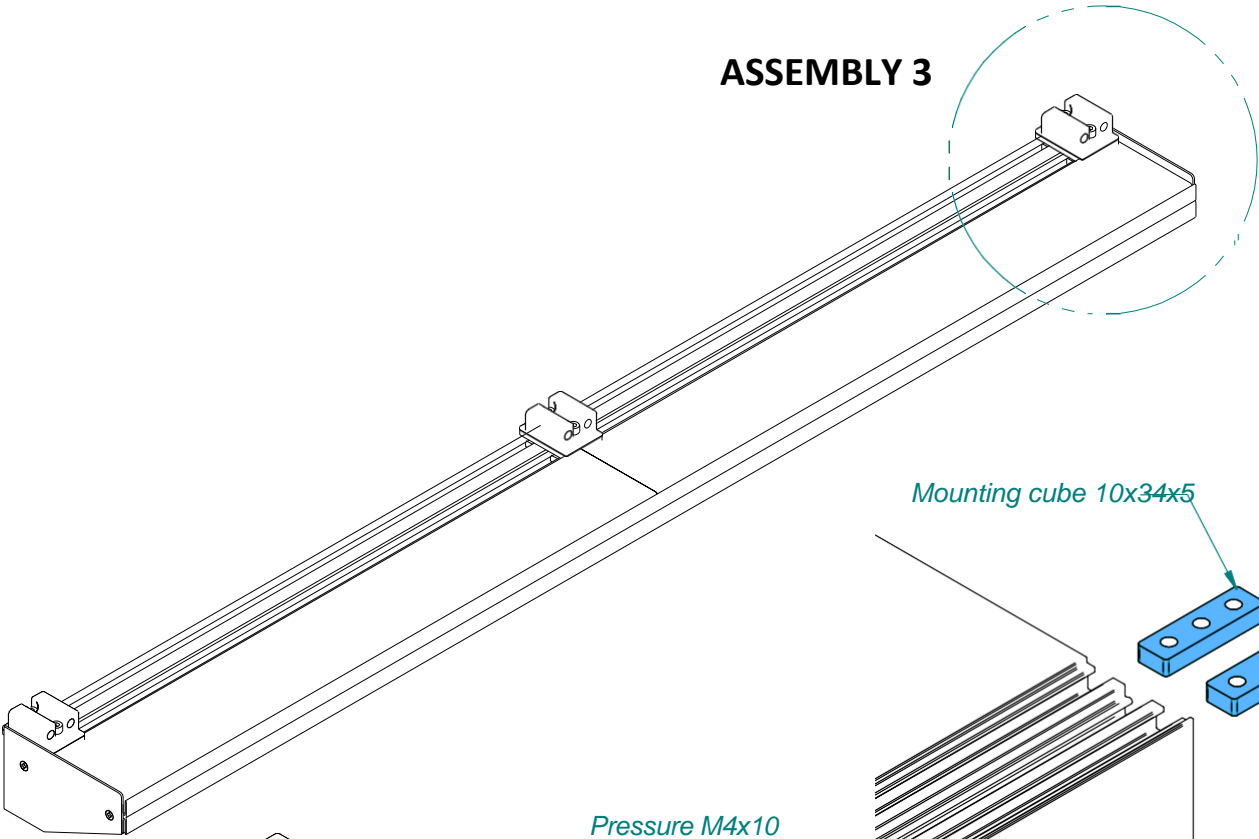


STEP 5

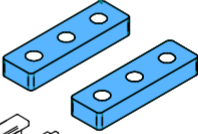


STEP 6

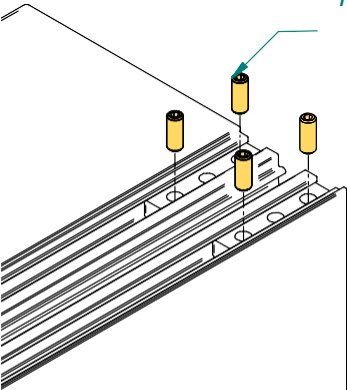
**ASSEMBLY 3**



Mounting cube 10x34x5

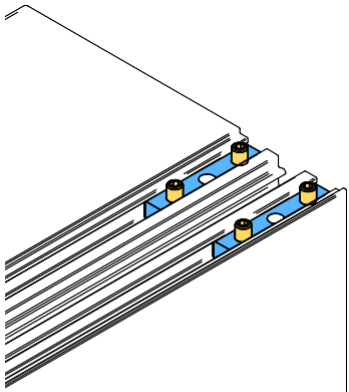


Pressure M4x10 tapered screw

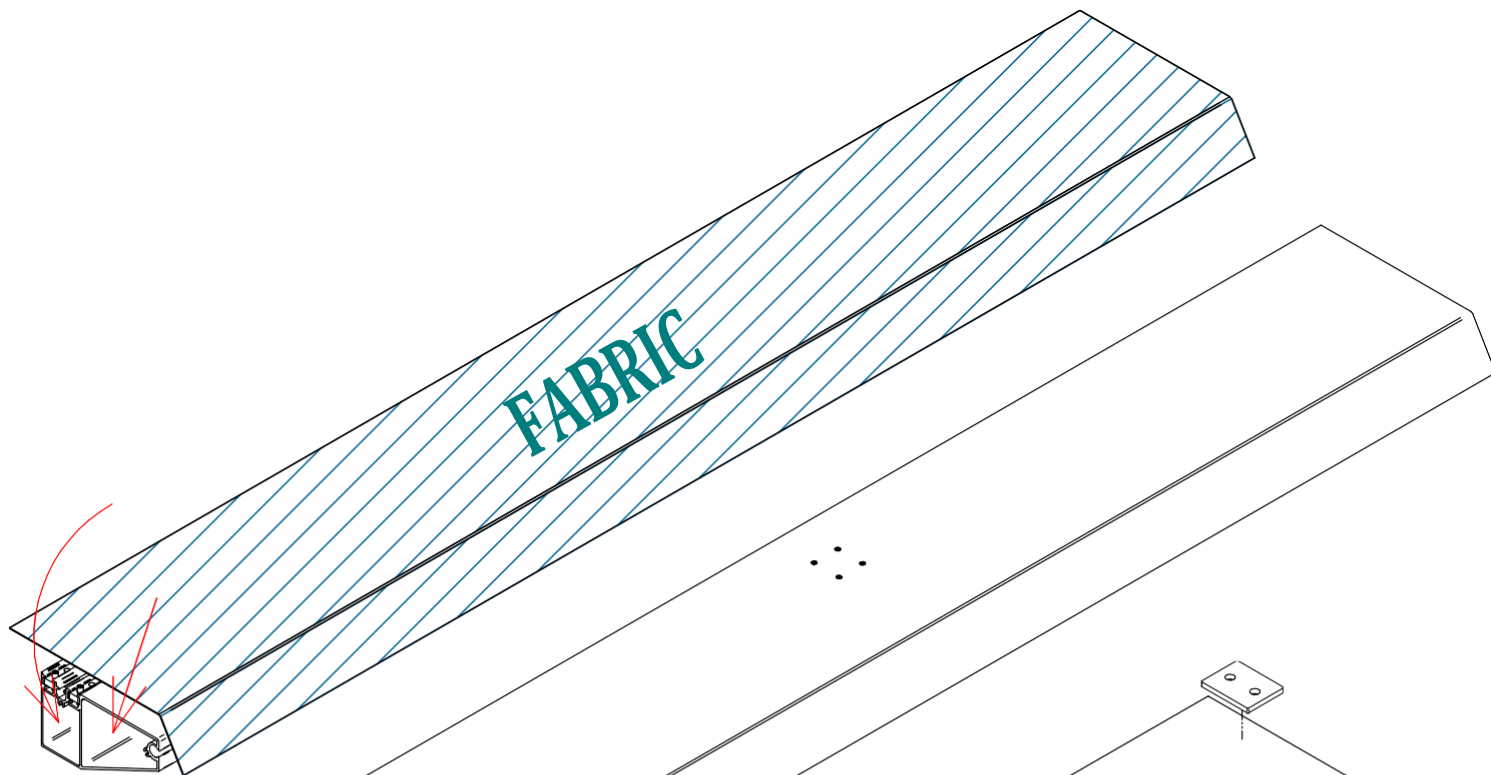


STEP 9

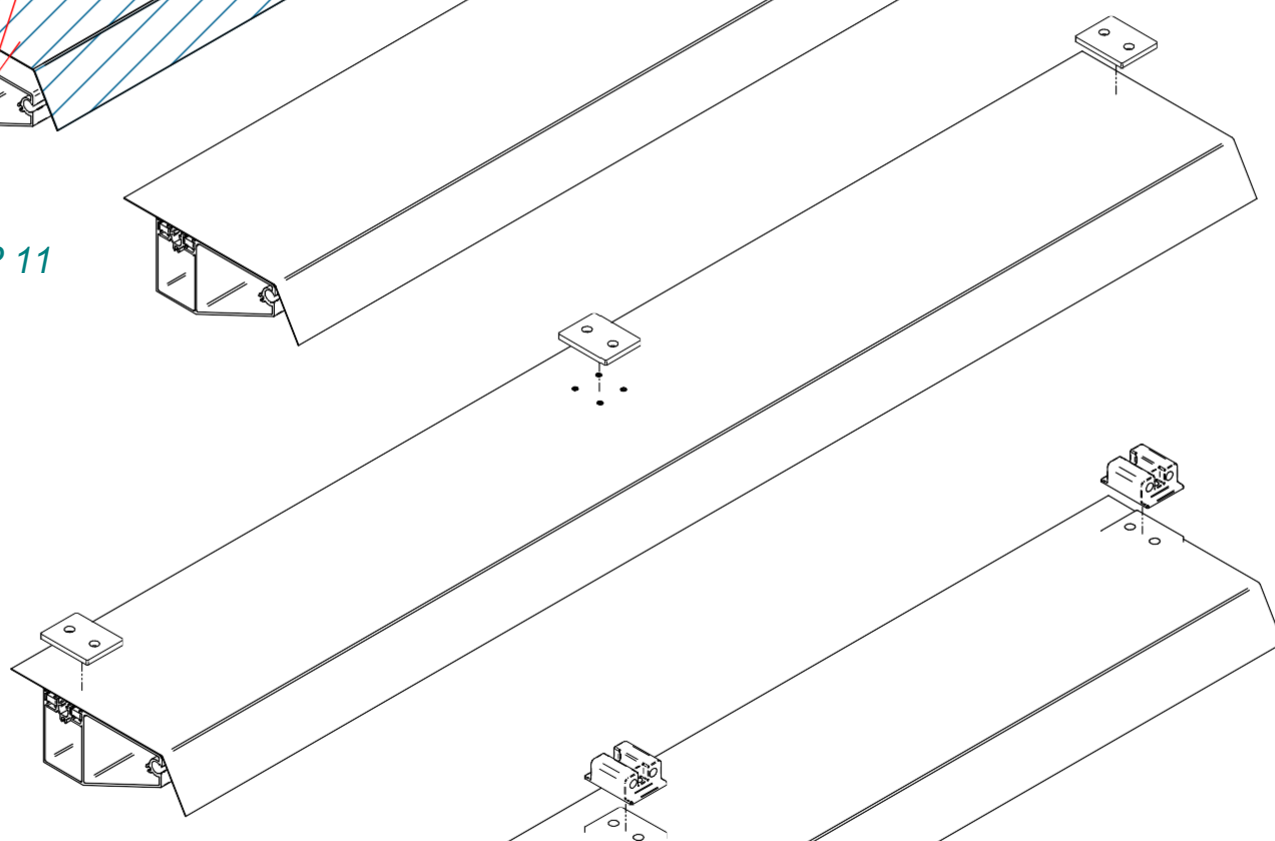
STEP 8



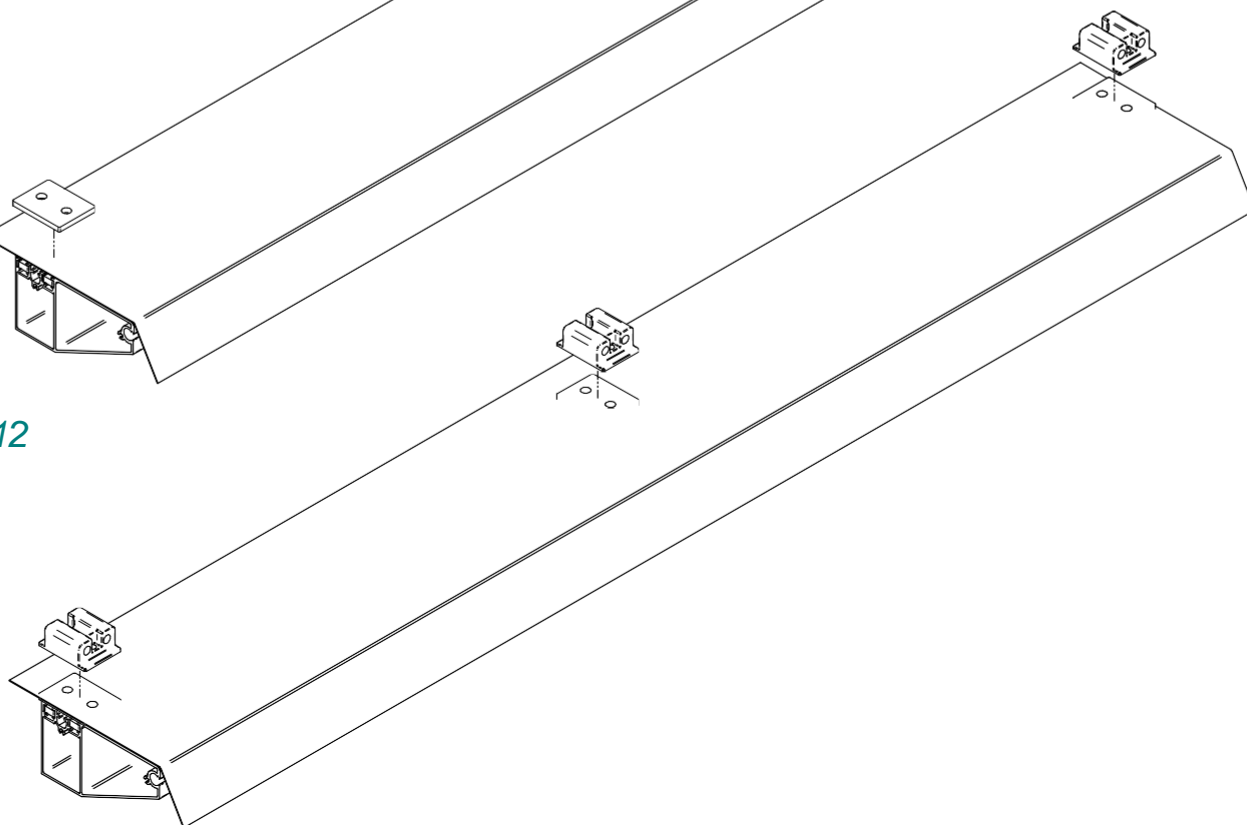
STEP 10



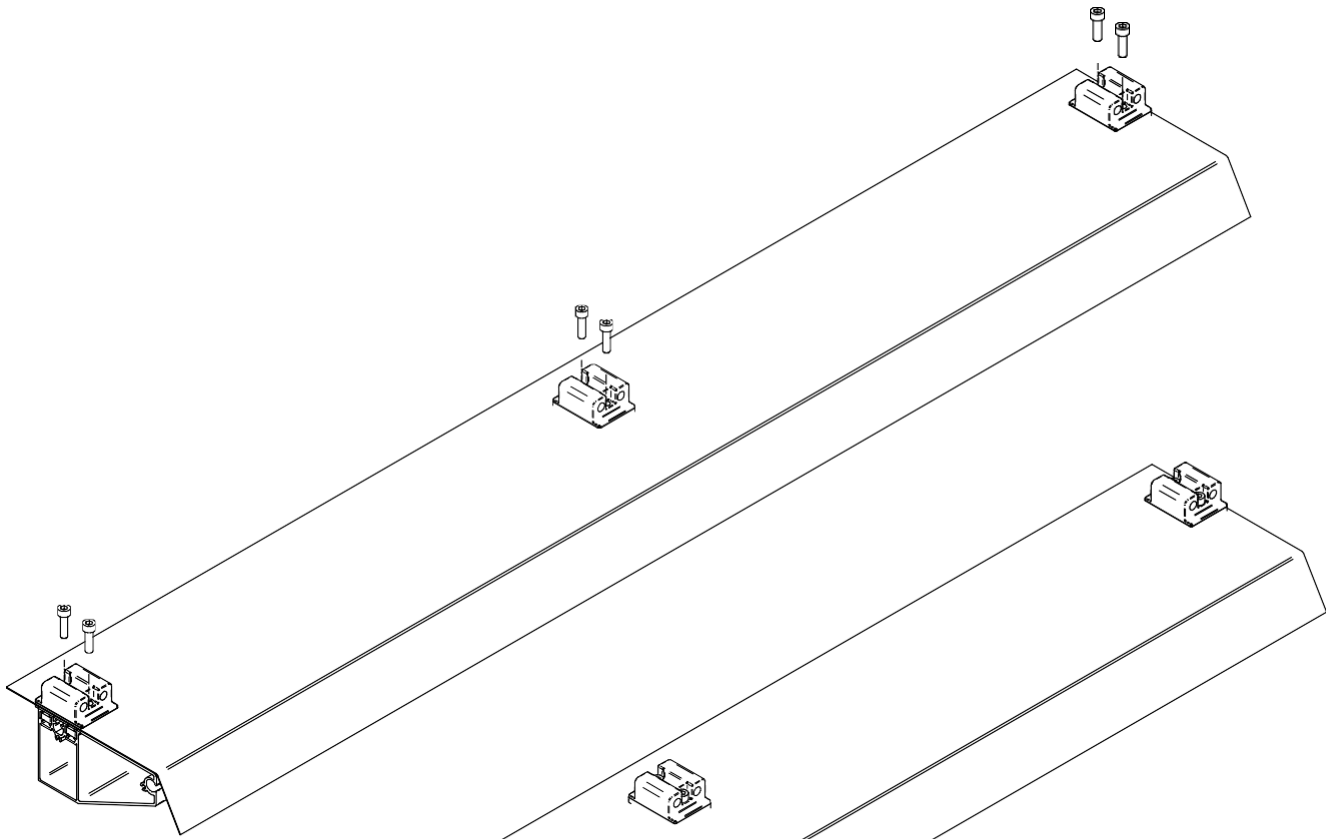
STEP 11



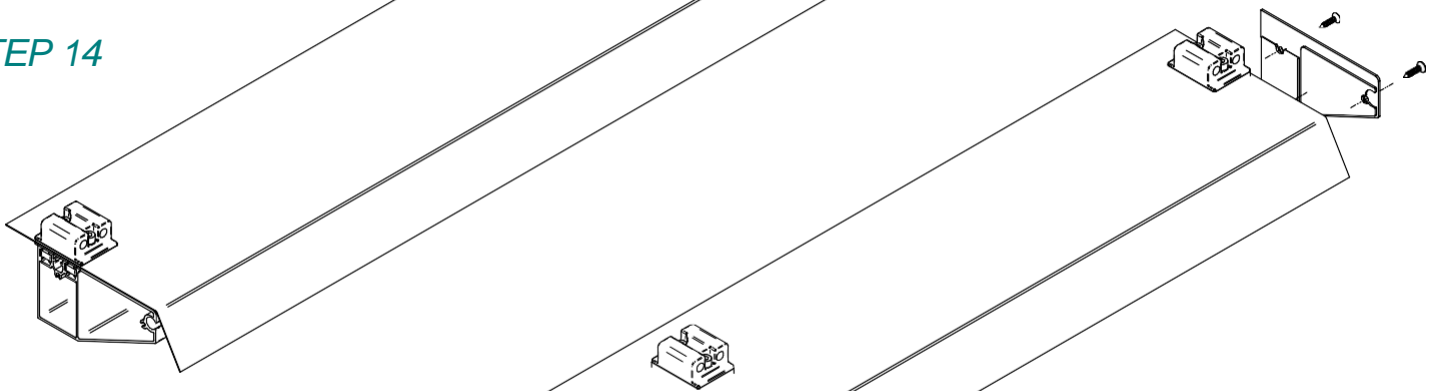
STEP 12



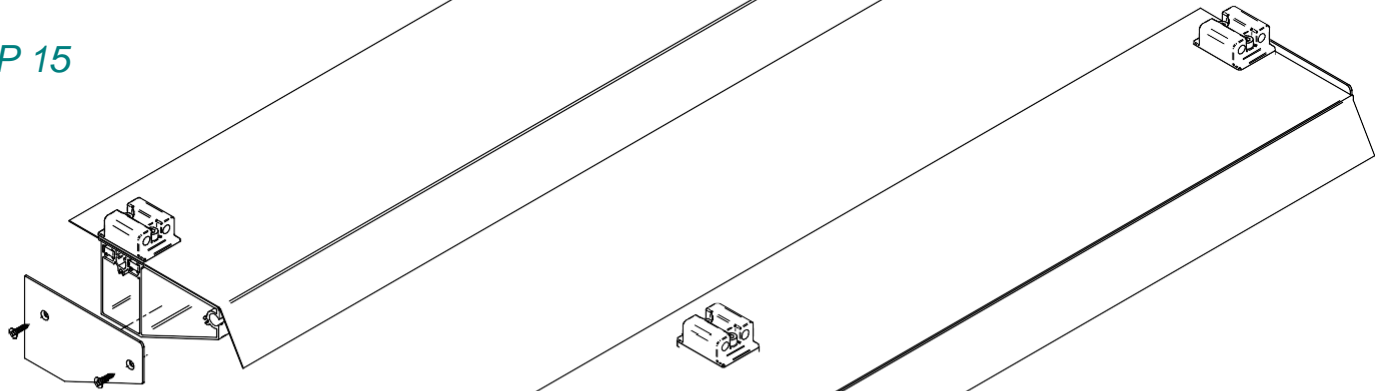
STEP 13



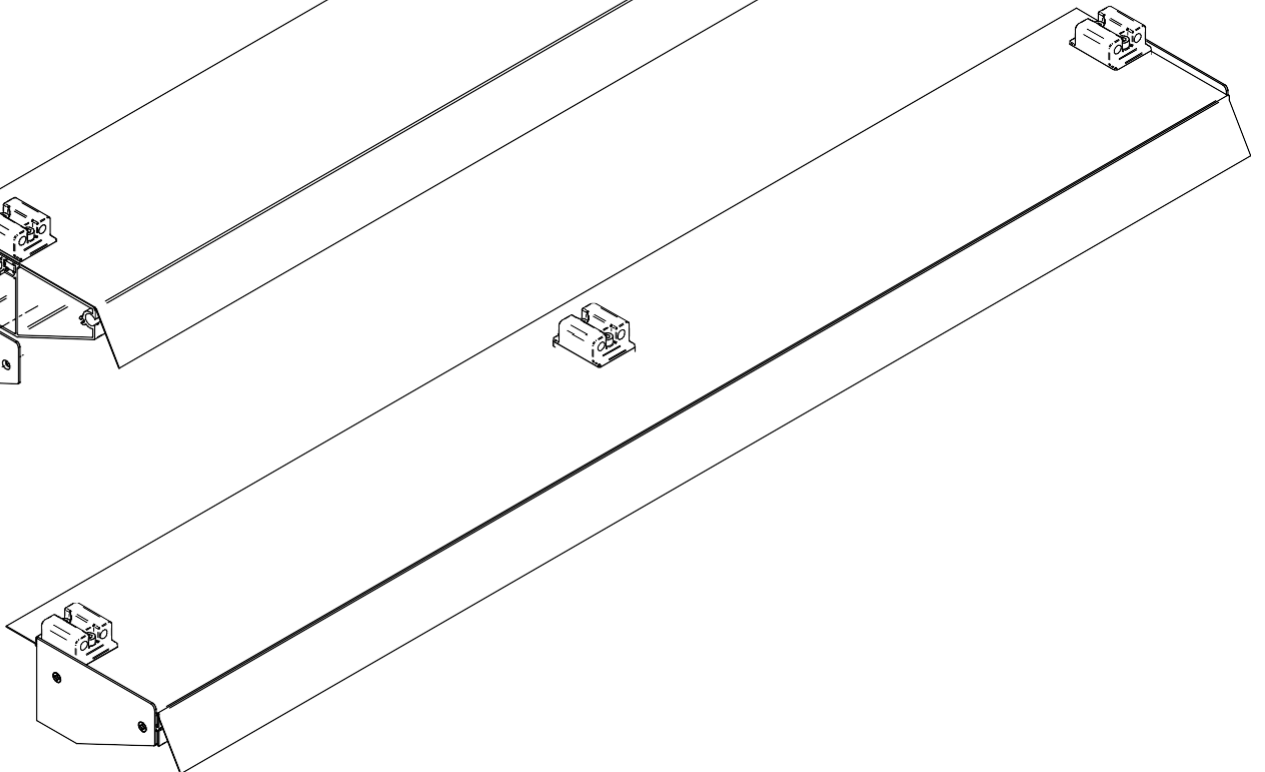
STEP 14



STEP 15

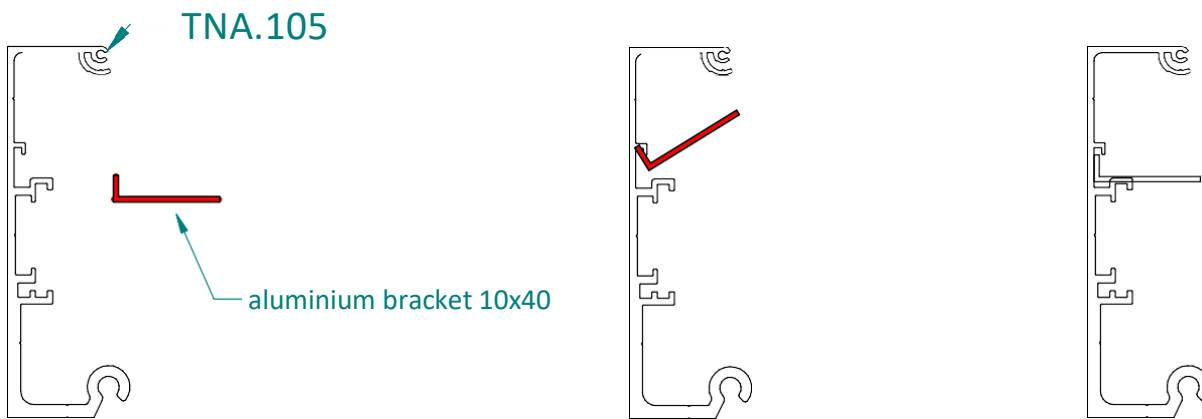


STEP 16

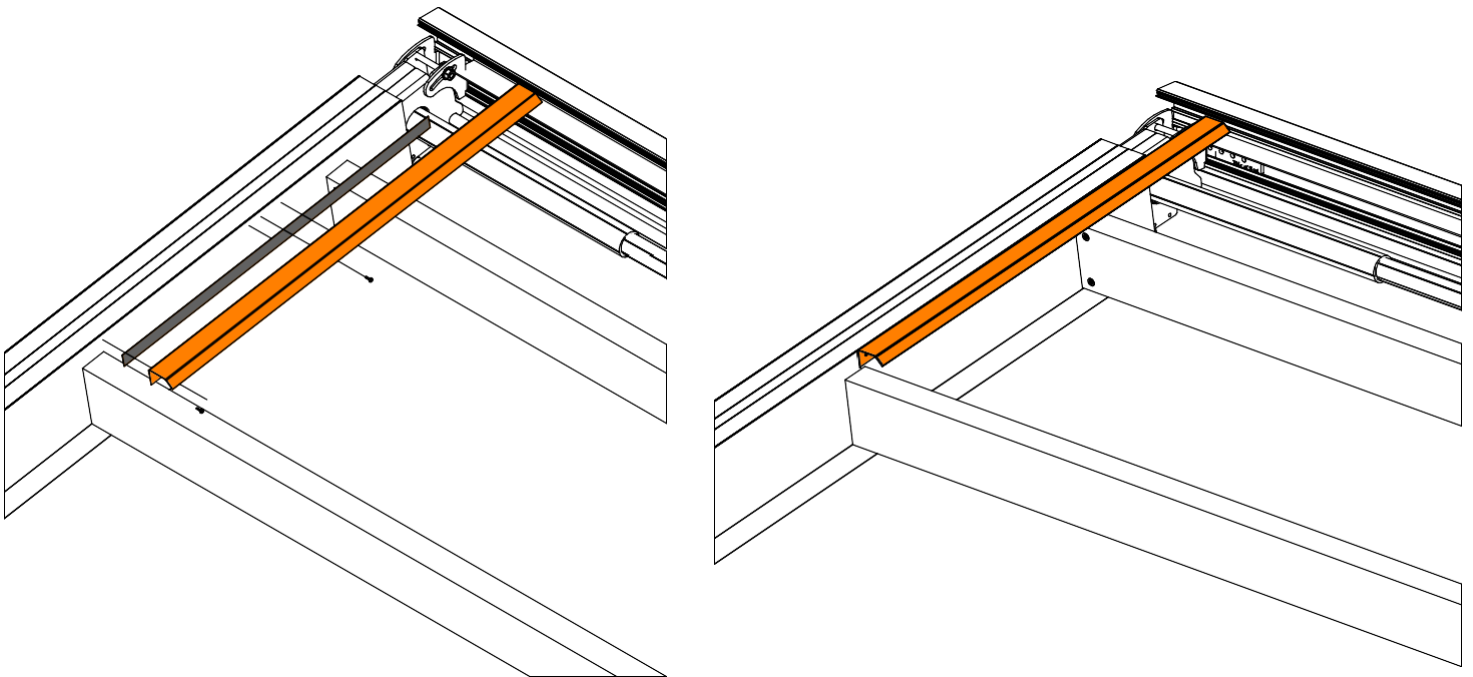


STEP 17

**A) INSTALLING A MOUNTING BRACKET  
FOR THE SYSTEM VISOR ON THE LAUNCH PROFILE**



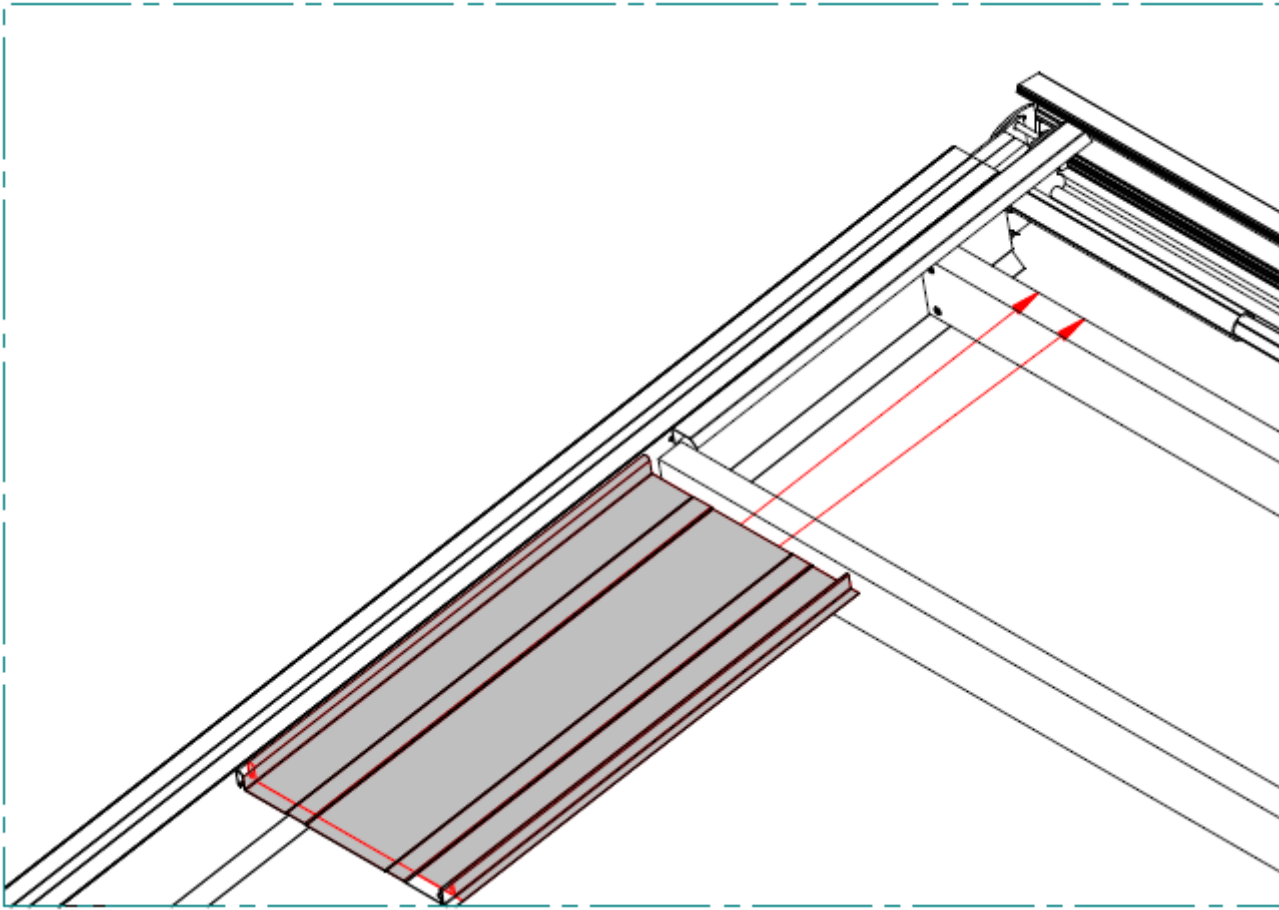
**ASSEMBLY OF THIS BRACKET IS ALSO CARRIED OUT IN FURTHER  
MODULES THAT DO NOT HAVE A MOTORBOX.**



**B) Assembly of the side flashing for the system visor:**

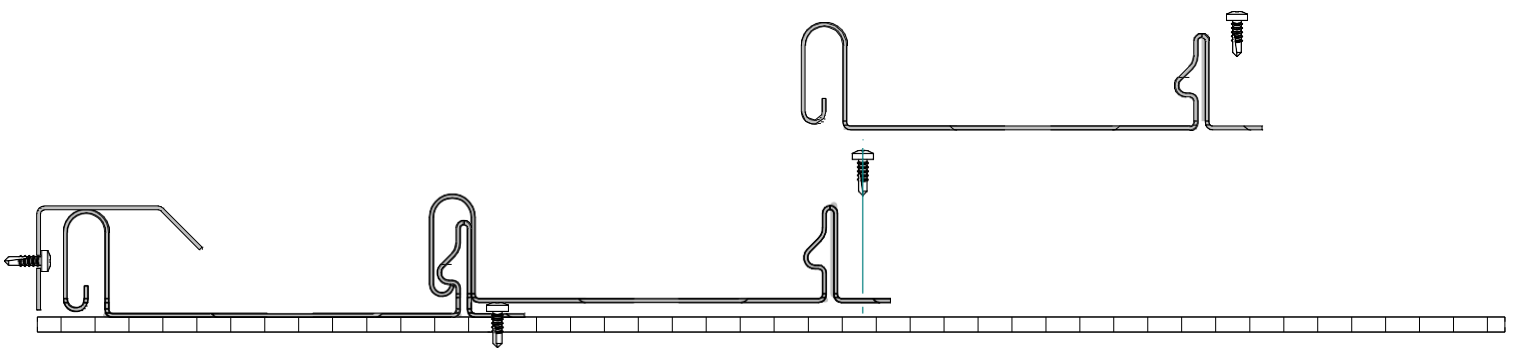
- affix a butyl ribbon
- apply the flashing to the side wall of the guide and tighten with self-drilling screws
- repeat this step on the opposite guide

*C) Installation of the first panel of the system visor*



*Slide the first panel under the side flashing of the system visor and lock it with self-drilling screws*

*D) Installation of further panels:*



*Tighten the first panel with flat-headed, self-drilling screws to the profile under the visor.*

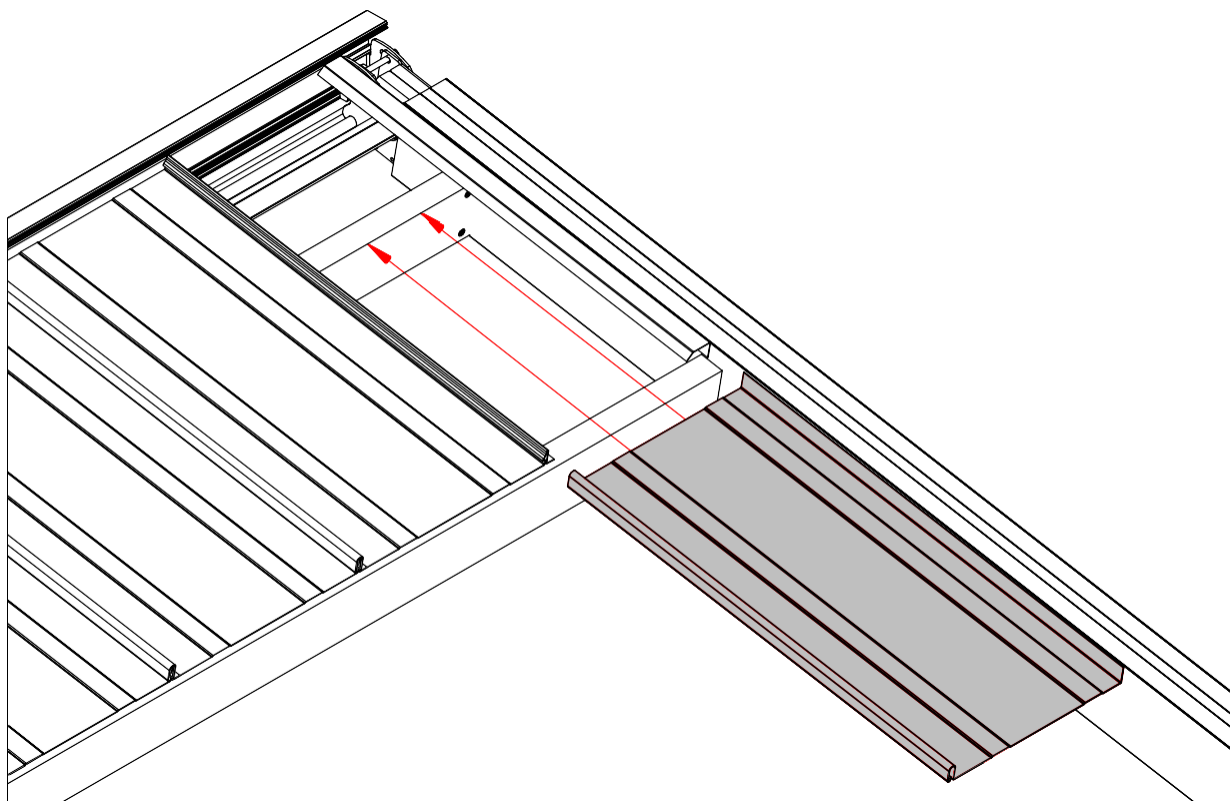
- put in another panel,*
- click it onto the joint and lock with screws.*
- repeat the above steps*



### *E) Completion of the last system visor*



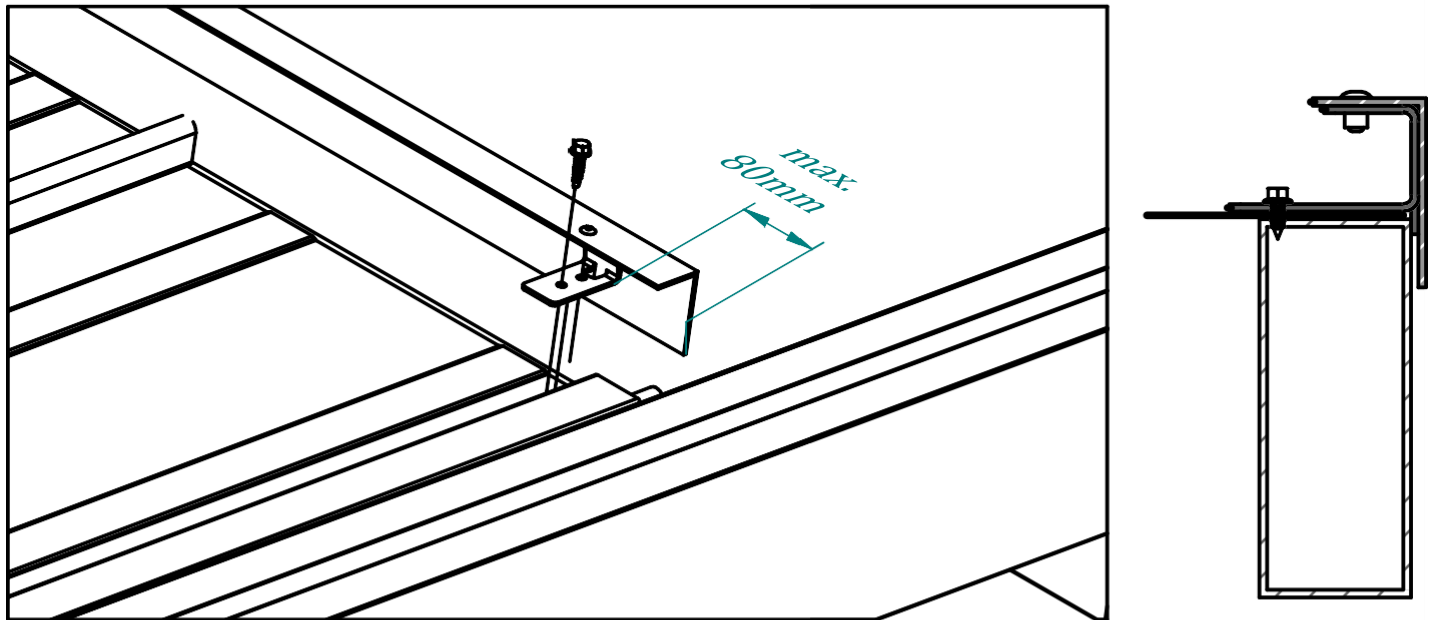
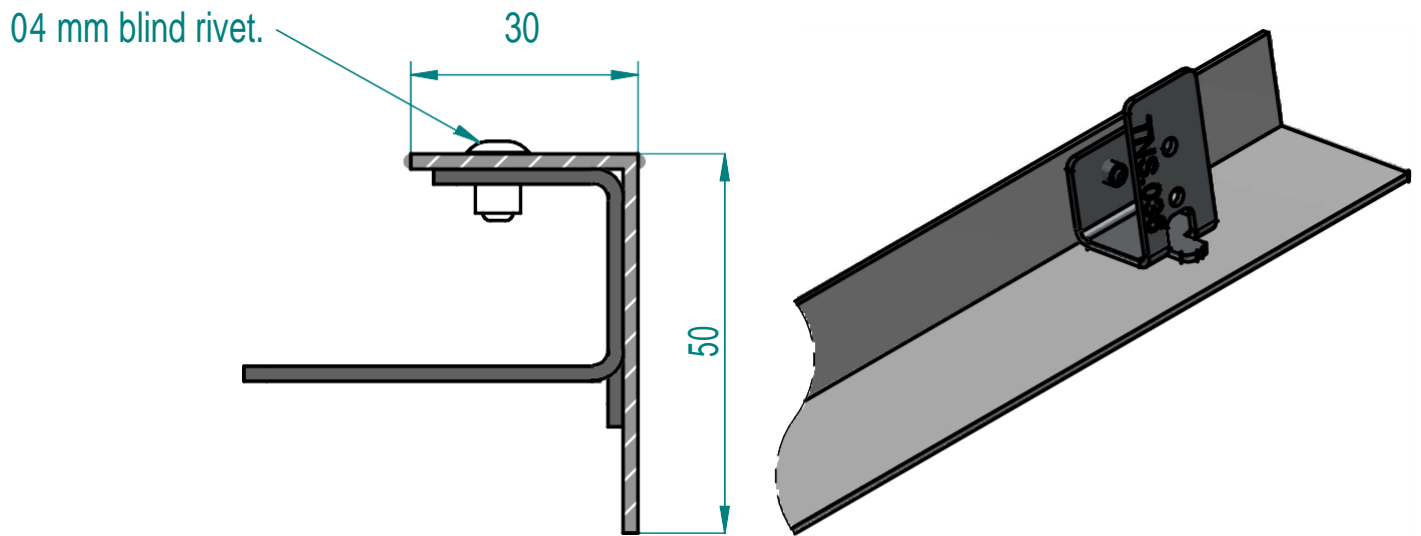
*Cut the last panel to the correct size + 25mm and bend the edge upwards*



*Slide the cut panel under the side flashing of the visor; lock it with a self-drilling screw.*



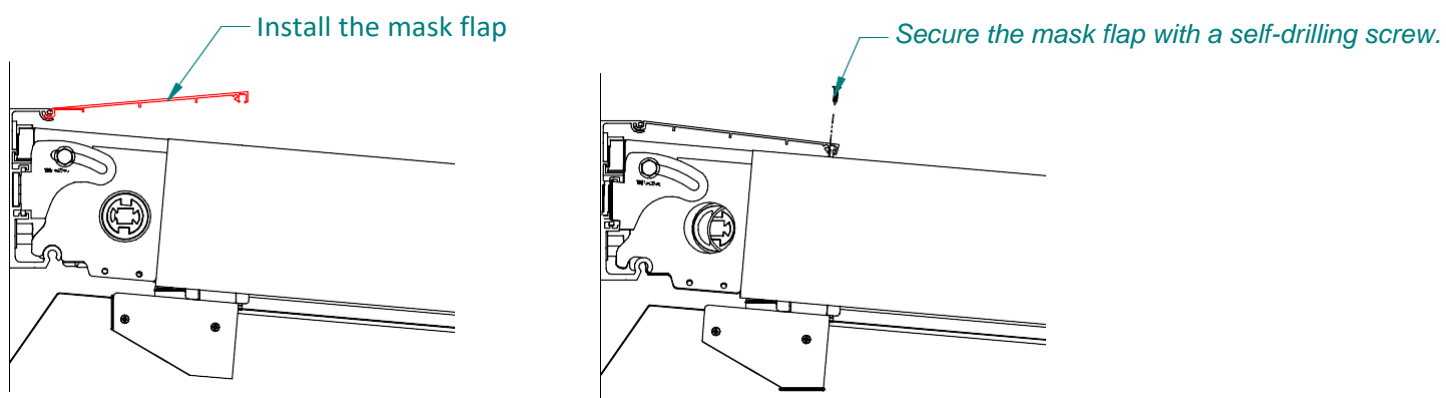
*F) Assembling the front bracket for the system visor:*



*Installing a masking bracket:*

- *put the bracket with handles to the edge of the beam under the visor,*
- *tighten with a self-drilling screw, with EPDM nuts, to the beam under the fabric visor*

### *G) Assembling the upper grille*



### *H) Installing the side cover-cap*

